

DC1

F O R
V I S I O N A R I E S
O N L Y

THIS IS NOT
ANOTHER TOWER BY
THE DUBAI CANAL.

THIS IS THE ONE.
THIS IS DG1.





DG1 is the first tower of its kind designed by DarGlobal, the visionary brand that was among the first to introduce luxury brands into living spaces in Dubai.



ELIE SAAB



MISSONI

MOUAWAD



VERSACE



LAST UNITS RELEASED

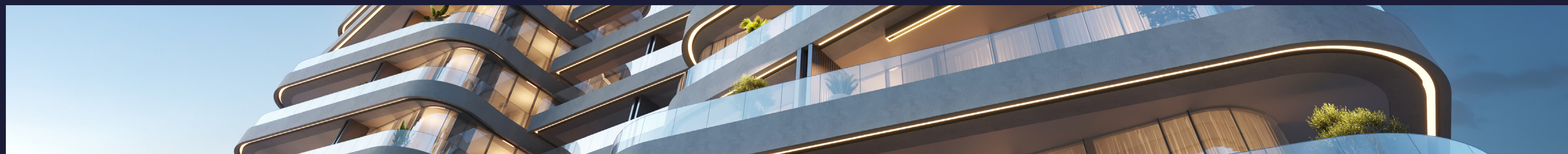


DG1 represents the **FIRST** of a series of exclusive luxury residences with the ultimate architecture, the ultimate location and the ultimate interior specifications.





D O N ' T M I S S O U T O N L I V I N G B Y T H E D U B A I C A N A L



ICONIC DESIGN. EUROPEAN SPECS. ULTIMATE PRIVACY.

Now is the perfect time to secure
your place in the heart of Dubai.

Don't miss out on the last
remaining units in DG1, only a few
studios, 1, 2, and 3-bedrooms left!

Contact us today to claim your
new home by the Dubai Canal.





P R I M E L O C A T I O N

DG1 is located in the heart of Business Bay directly on Dubai Canal, where stunning views of the city and the water will impress the residents and their guests. The units enjoy North and East/West views, all of them facing Downtown Dubai and Burj Khalifa.

LOCATION

The strategic location of DG1 grants an unbelievable proximity to all that matters. With Burj Khalifa, Dubai Mall and Dubai Opera just a few steps away, and easy access to main roads like Sheikh Zayed Rd, Al Khail Rd and Meydan Rd, DG1 truly embodies the vibrant soul of the city.

4 MIN TO	📍 URBAN OASIS BY MISSONI
4 MIN TO	HILTON HOTEL DUBAI
4 MIN TO	JW MARRIOTT DUBAI
5 MIN TO	THE DUBAI OPERA
5 MIN TO	📍 DAVINCI TOWER BY PAGANI
6 MIN TO	BURJ KHALIFA
6 MIN TO	THE DUBAI MALL
6 MIN TO	THE DORCHESTER DUBAI
7 MIN TO	📍 W RESIDENCES DUBAI - DOWNTOWN
9 MIN TO	SOUK AL BAHAR
12 MIN TO	DUBAI INTERNATIONAL AIRPORT





B R E A T H T A K I N G V I E W S

Every studio enjoys stunning vistas of Burj Khalifa, Downtown Dubai, and the Dubai Canal, enhanced by staggered curved balconies.



BURJ KHALIFA & DOWNTOWN VIEWS





NORTH-EAST DAY VIEW



NORTH-EAST NIGHT VIEW



NORTH-WEST NIGHT VIEW





CRAFTED BY
GENSLER
ARCHITECTS

The architecture fully reflects the dynamic attitude of DG1. Standing out from the cluttered panorama as it recalls a piece of art rather than a conventional tower.

Crafted by Gensler Architects, the most avantgarde designers of our time, the DG1 tower embodies a shape that reshapes the city around it. A sculpture to inhabit, giving every floor a new perspective of the world.





THE WONDER INSIDE

In the building, a great variety of residences in terms of spaces and sizes is conceived to satisfy every kind of need. Style, comfort and luxury are what make these apartments truly unique: decorated with a classy and contemporary taste, each with a private balcony to enjoy the impressive views.











E U R O P E A N S P E C I F I C A T I O N S

Experience the finest in European design with marble interiors, high-end kitchen fittings, and floor-to-ceiling windows that flood your space with natural light.



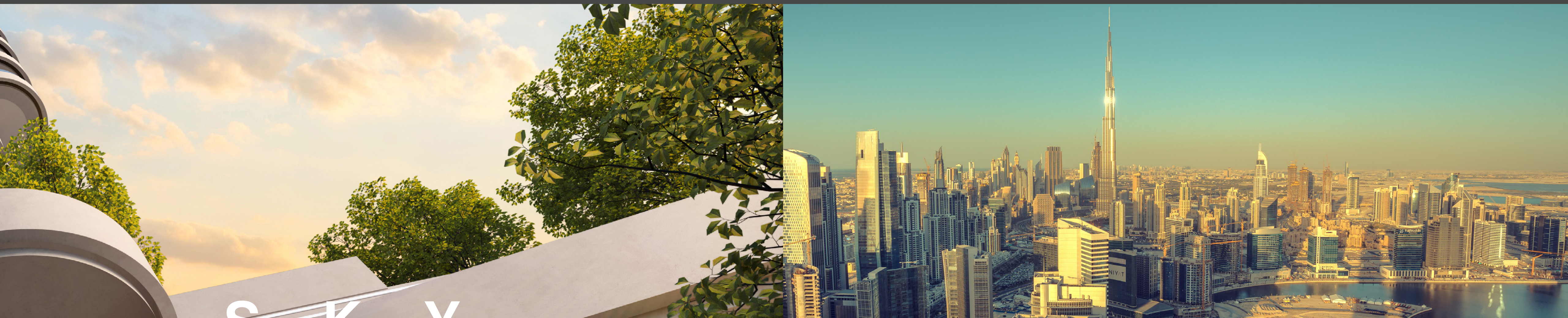
THE ULTIMATE
PREMIUM
AMENITIES





DELVE INTO
THE INFINITY
POOL DIRECTLY
BY THE CANAL

The Infinity pool at DG1 is a tranquil experience like no other, situated next to a children play area. Directly overlooking the Dubai Canal, you will feel as though your midday swim is a getaway around the canal.



SKY GARDEN

Get away from the urban jungle and immerse yourself in the enchanting Sky Garden on the rooftop. Located on level 16, this is a peaceful nest to reconnect with nature.



I N N E R P E A C E

There's no need to travel far in order
to find real peace of mind.

A yoga studio in the building will be at
disposal of residents who are looking
for a workout or a meditation session,
without leaving their home.

STATE OF THE ART GYM AND RECREATIONAL SPACES

With open views of lush green spaces, the distinctive gym is fully equipped with everything one desires to refuel for the day ahead.





P R I V A C Y A S S U R E D

No retail spaces in the building
to ensure your peace of mind
and privacy.



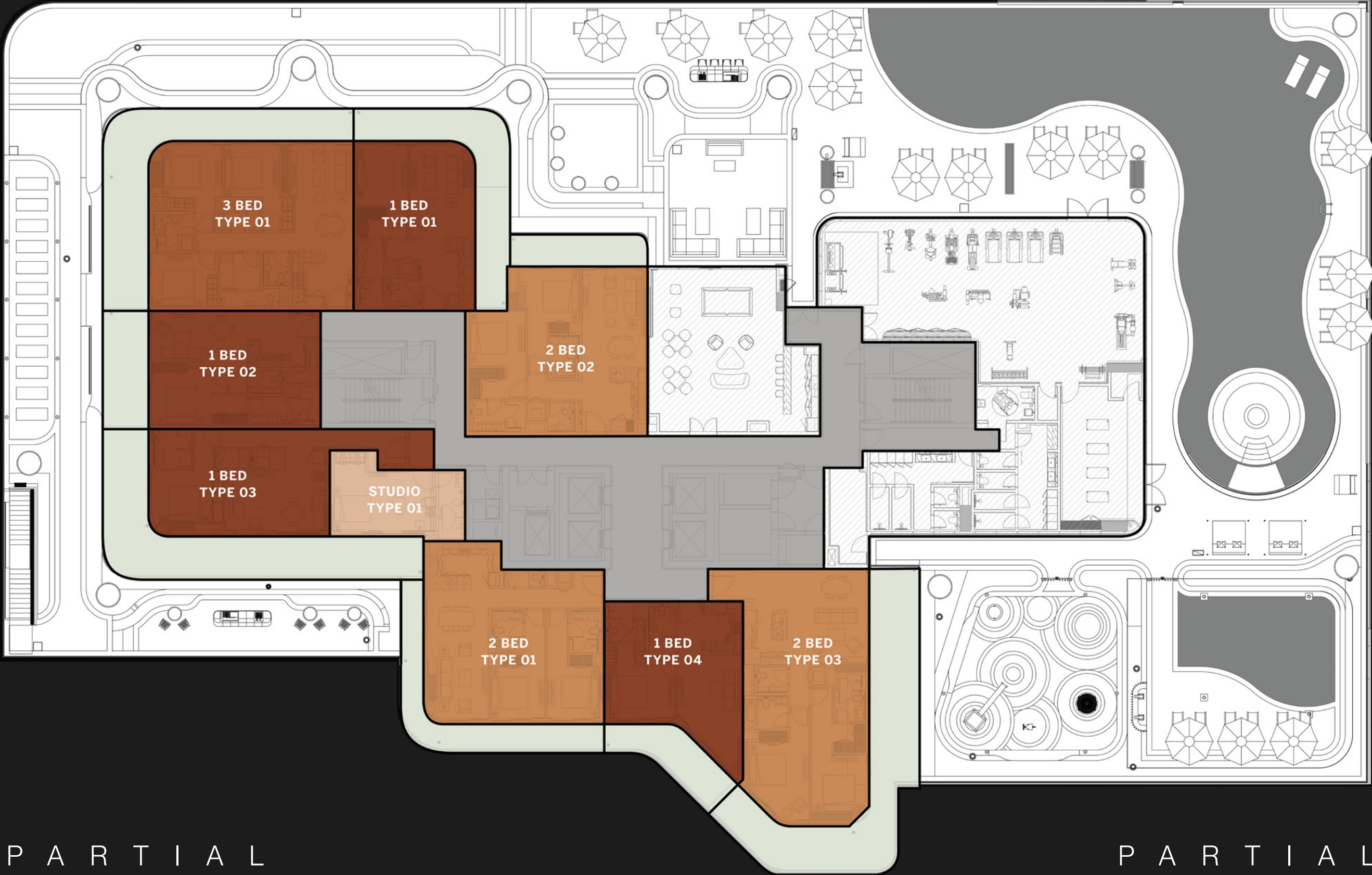
DG1

F L O O R P L A N S



TYPICAL
FLOOR PLAN
GARDEN SUITES

LEVEL
01



PARTIAL
VIEWS

PARTIAL
VIEWS

CITY VIEWS

- STUDIO
- TWO BEDROOMS
- ONE BEDROOM
- THREE BEDROOMS

Disclaimer: All pictures, plans, layouts, information, data and details included in this brochure are indicative only and may change at any time up to the final 'as built' status in accordance with final designs of the project, regulatory approvals and planning permissions. All accessories and interior finishes such as wallpaper, chandeliers, furniture, electronics, white goods, curtains, hard and soft landscaping, pavements, features, gym, swimming pool(s) and other elements displayed in the brochure, or within the show apartment or between the plot boundary and the unit, are not part of the unit and are shown for illustrative purposes only.

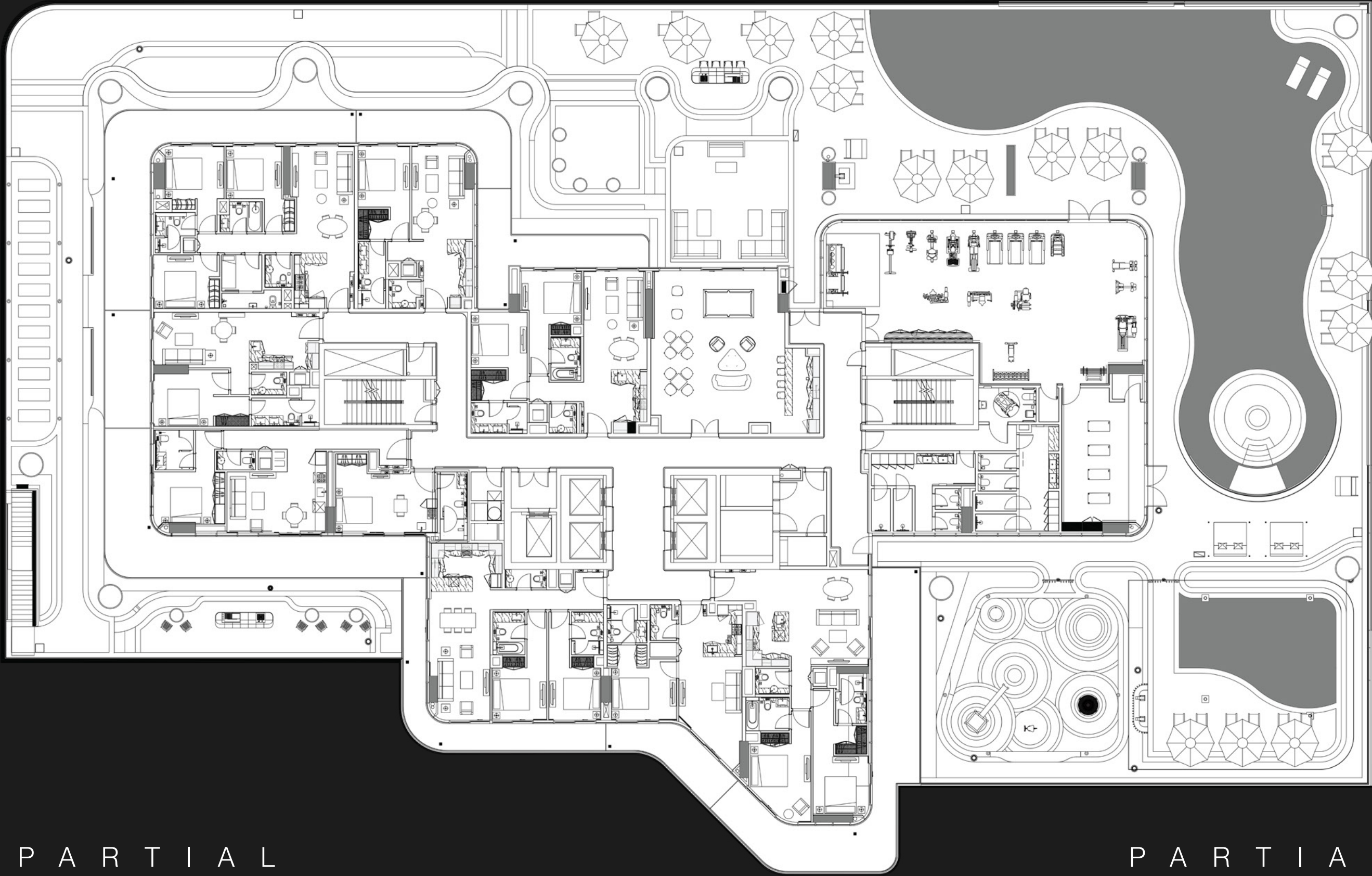
TYPICAL
FLOOR PLAN
GARDEN SUITES

LEVEL
01



- STUDIO
- ONE BEDROOM
- TWO BEDROOMS
- THREE BEDROOMS

Disclaimer: All pictures, plans, layouts, information, data and details included in this brochure are indicative only and may change at any time up to the final 'as built' status in accordance with final designs of the project, regulatory approvals and planning permissions. All accessories and interior finishes such as wallpaper, chandeliers, furniture, electronics, white goods, curtains, hard and soft landscaping, pavements, features, gym, swimming pool(s) and other elements displayed in the brochure, or within the show apartment or between the plot boundary and the unit, are not part of the unit and are shown for illustrative purposes only.



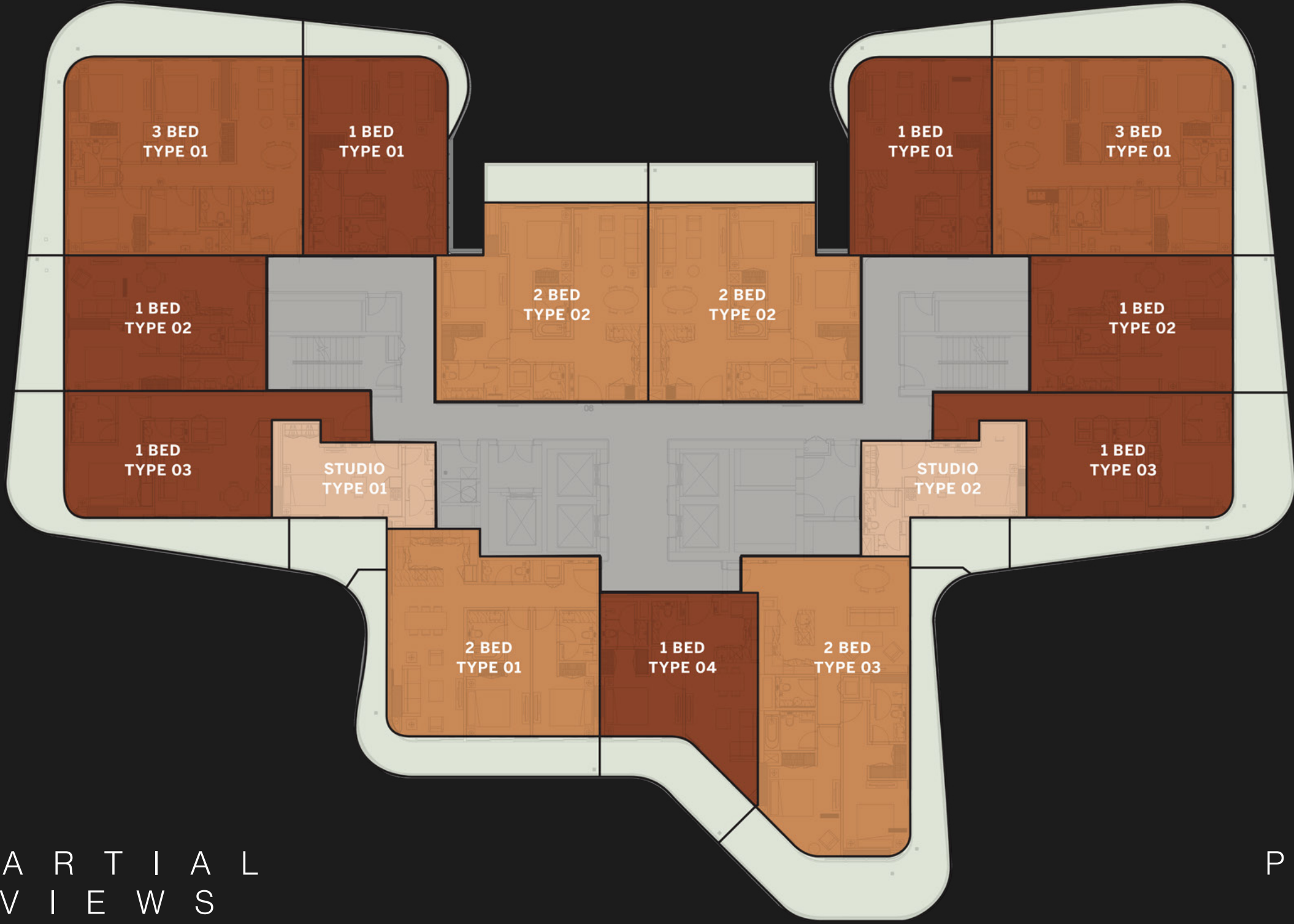
PARTIAL
VIEWS

PARTIAL
VIEWS

CITY VIEWS

TYPICAL
FLOOR PLAN
01A

LEVELS
02 - 04, 09 - 12



PARTIAL
VIEWS

PARTIAL
VIEWS

CITY VIEWS

- STUDIO
- ONE BEDROOM
- TWO BEDROOMS
- THREE BEDROOMS

Disclaimer: All pictures, plans, layouts, information, data and details included in this brochure are indicative only and may change at any time up to the final 'as built' status in accordance with final designs of the project, regulatory approvals and planning permissions. All accessories and interior finishes such as wallpaper, chandeliers, furniture, electronics, white goods, curtains, hard and soft landscaping, pavements, features, gym, swimming pool(s) and other elements displayed in the brochure, or within the show apartment or between the plot boundary and the unit, are not part of the unit and are shown for illustrative purposes only.

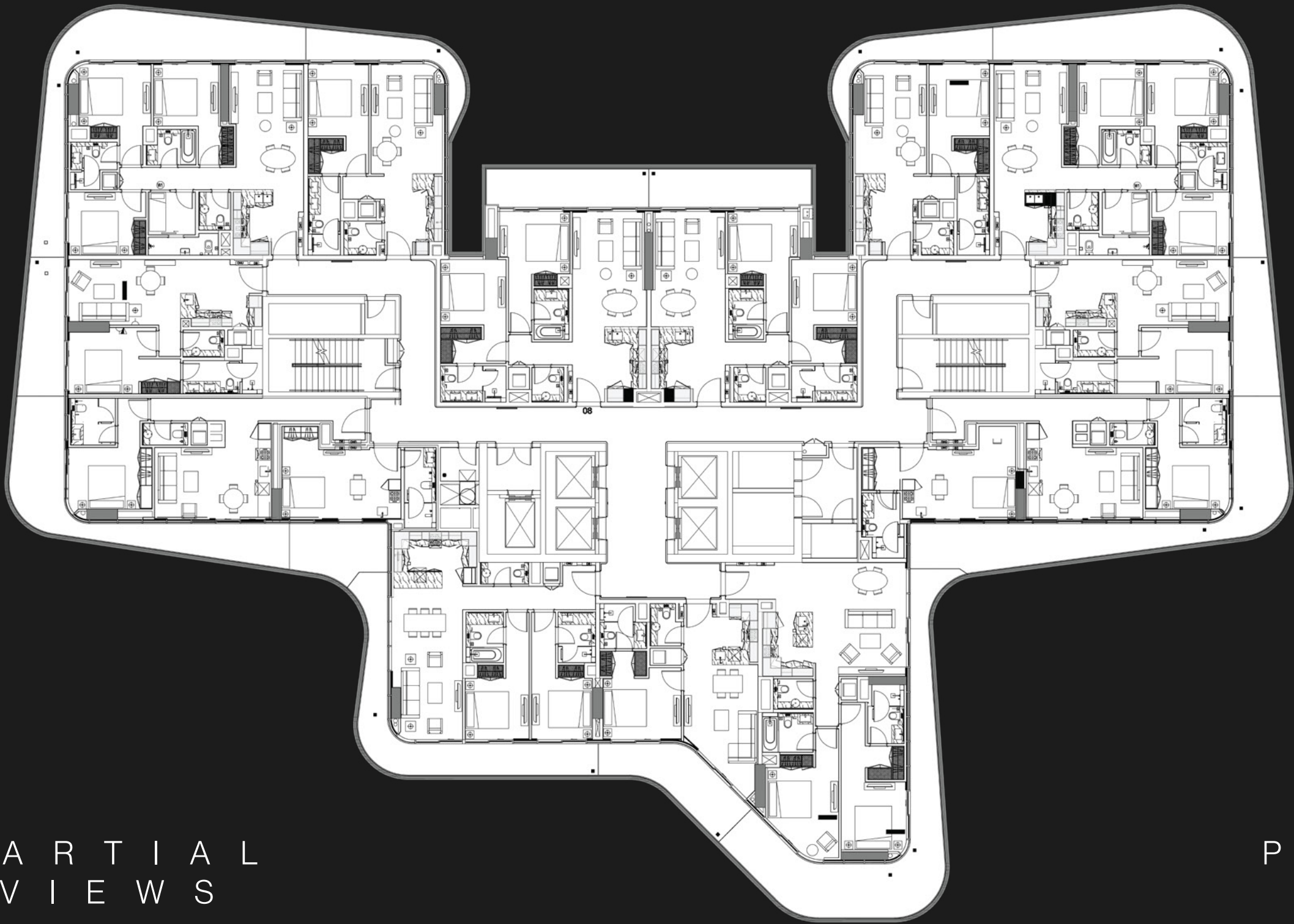
TYPICAL
FLOOR PLAN
01A

LEVELS
02 - 04, 09 - 12



- STUDIO
- ONE BEDROOM
- TWO BEDROOMS
- THREE BEDROOMS

Disclaimer: All pictures, plans, layouts, information, data and details included in this brochure are indicative only and may change at any time up to the final 'as built' status in accordance with final designs of the project, regulatory approvals and planning permissions. All accessories and interior finishes such as wallpaper, chandeliers, furniture, electronics, white goods, curtains, hard and soft landscaping, pavements, features, gym, swimming pool(s) and other elements displayed in the brochure, or within the show apartment or between the plot boundary and the unit, are not part of the unit and are shown for illustrative purposes only.



PARTIAL
VIEWS

PARTIAL
VIEWS

CITY VIEWS

TYPICAL
FLOOR PLAN
01B

LEVELS
05 - 08, 13 - 15

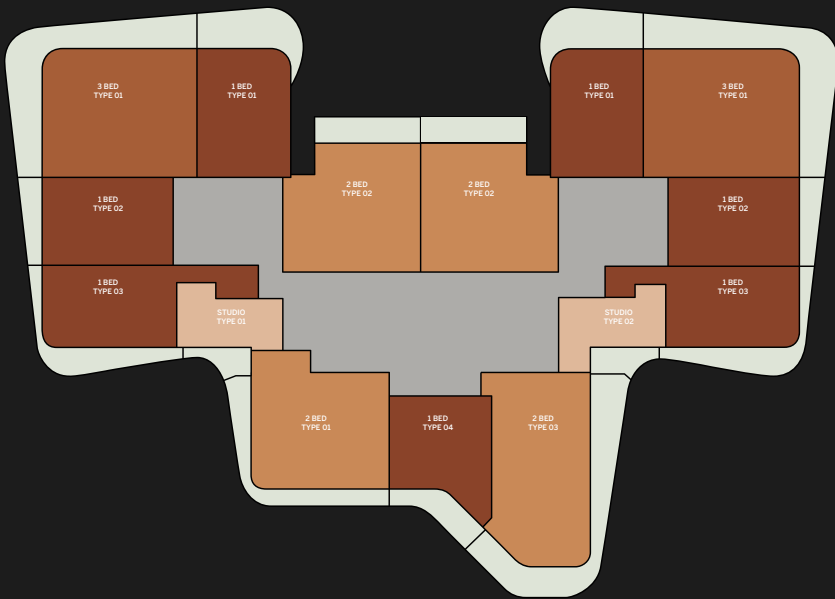


- STUDIO
- ONE BEDROOM
- TWO BEDROOMS
- THREE BEDROOMS

Disclaimer: All pictures, plans, layouts, information, data and details included in this brochure are indicative only and may change at any time up to the final 'as built' status in accordance with final designs of the project, regulatory approvals and planning permissions. All accessories and interior finishes such as wallpaper, chandeliers, furniture, electronics, white goods, curtains, hard and soft landscaping, pavements, features, gym, swimming pool(s) and other elements displayed in the brochure, or within the show apartment or between the plot boundary and the unit, are not part of the unit and are shown for illustrative purposes only.

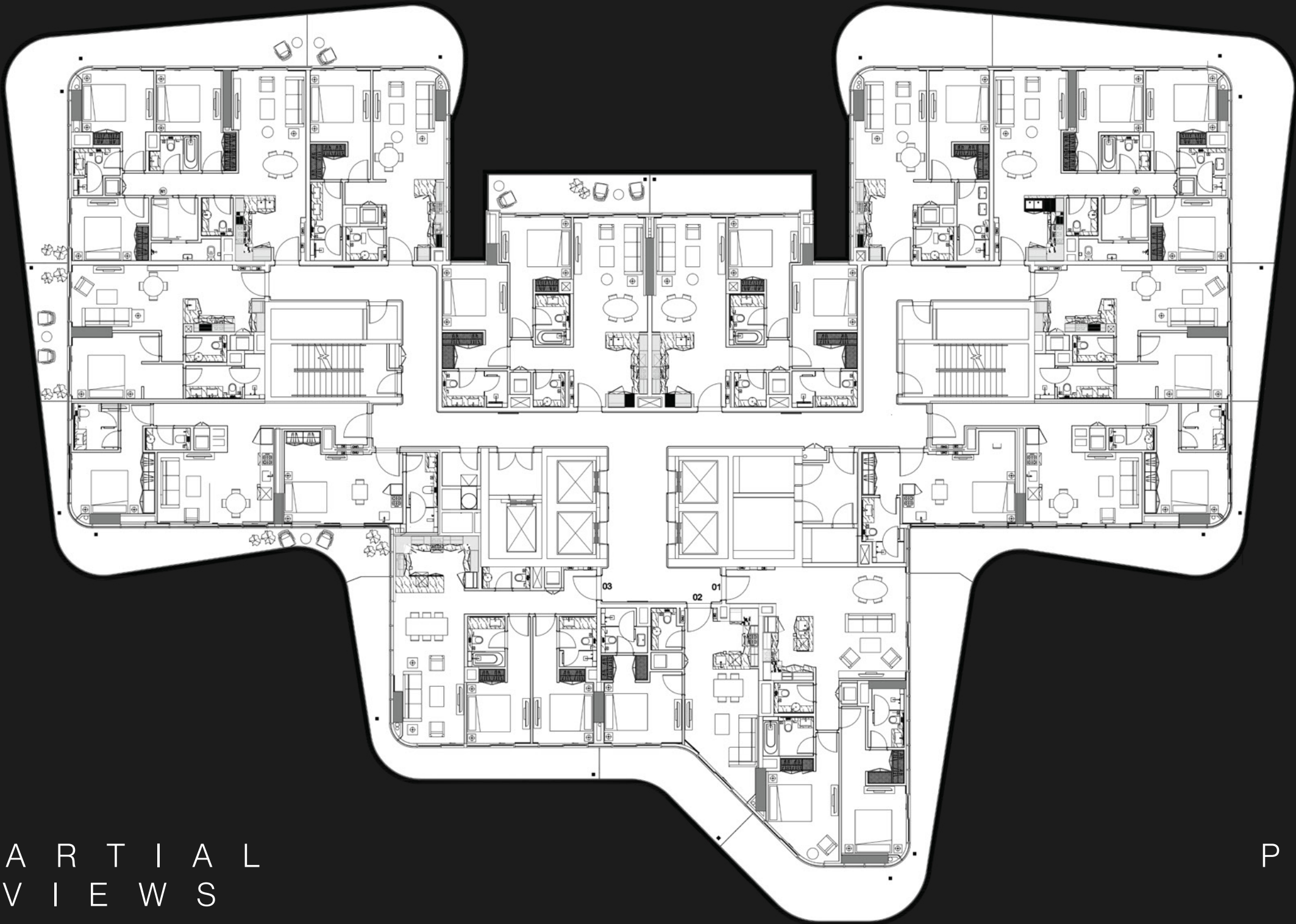
TYPICAL
FLOOR PLAN
01B

LEVELS
05 - 08, 13 - 15



- STUDIO
- ONE BEDROOM
- TWO BEDROOMS
- THREE BEDROOMS

Disclaimer: All pictures, plans, layouts, information, data and details included in this brochure are indicative only and may change at any time up to the final 'as built' status in accordance with final designs of the project, regulatory approvals and planning permissions. All accessories and interior finishes such as wallpaper, chandeliers, furniture, electronics, white goods, curtains, hard and soft landscaping, pavements, features, gym, swimming pool(s) and other elements displayed in the brochure, or within the show apartment or between the plot boundary and the unit, are not part of the unit and are shown for illustrative purposes only.



PARTIAL
VIEWS

PARTIAL
VIEWS

CITY VIEWS

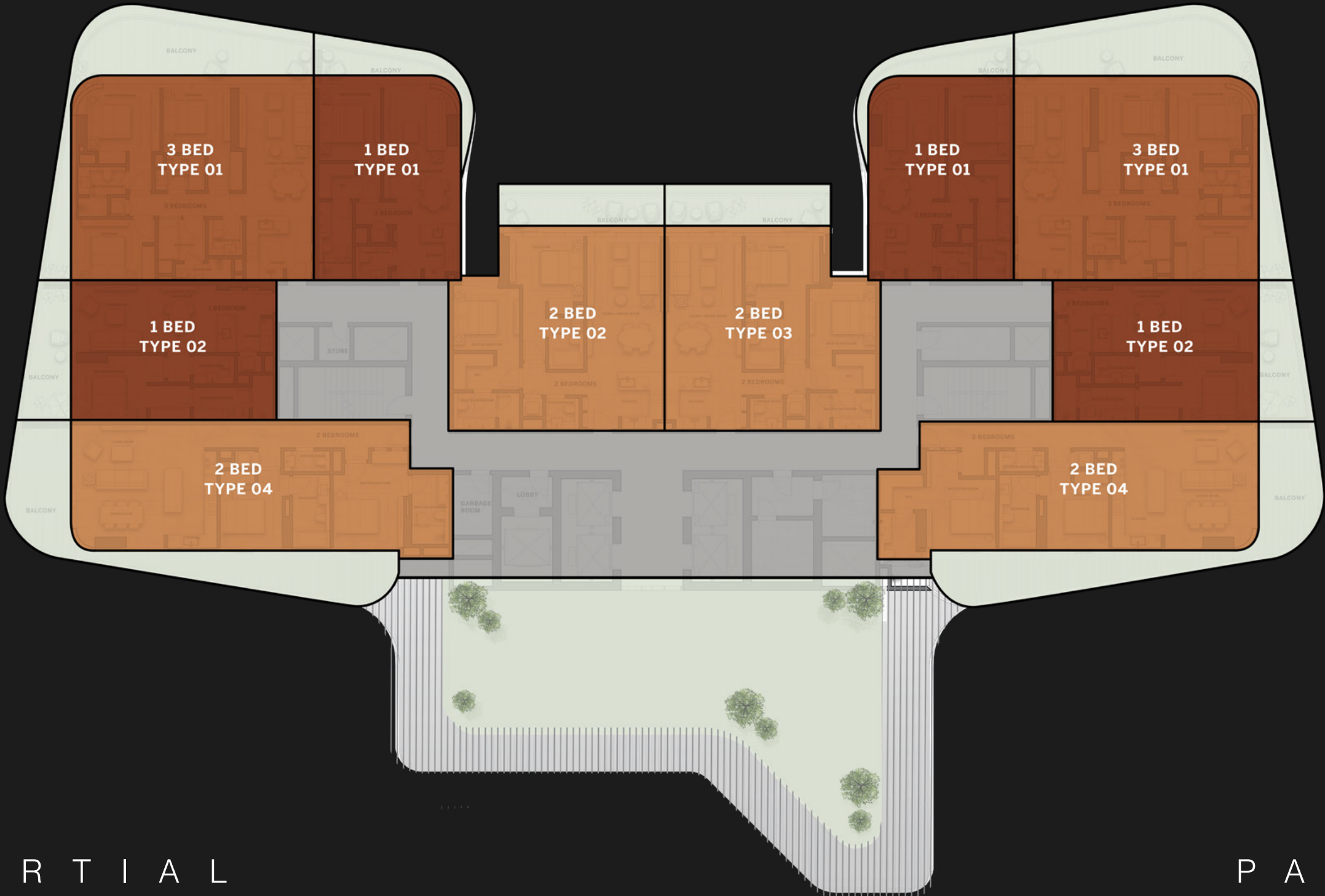
TYPICAL
FLOOR PLAN
SKY SUITES

LEVEL
16

DIRECT ACCESS TO
THE SKY GARDEN

- STUDIO
- ONE BEDROOM
- TWO BEDROOMS
- THREE BEDROOMS

Disclaimer: All pictures, plans, layouts, information, data and details included in this brochure are indicative only and may change at any time up to the final 'as built' status in accordance with final designs of the project, regulatory approvals and planning permissions. All accessories and interior finishes such as wallpaper, chandeliers, furniture, electronics, white goods, curtains, hard and soft landscaping, pavements, features, gym, swimming pool(s) and other elements displayed in the brochure, or within the show apartment or between the plot boundary and the unit, are not part of the unit and are shown for illustrative purposes only.



PARTIAL
VIEWS

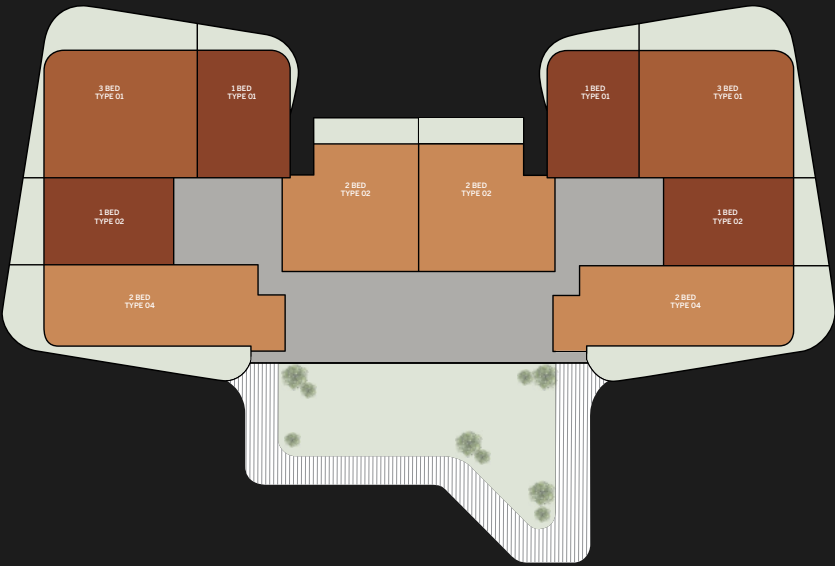
PARTIAL
VIEWS

CITY VIEWS

TYPICAL
FLOOR PLAN
SKY SUITES

LEVEL
16

DIRECT ACCESS TO
THE SKY GARDEN



- STUDIO
- ONE BEDROOM
- TWO BEDROOMS
- THREE BEDROOMS

Disclaimer: All pictures, plans, layouts, information, data and details included in this brochure are indicative only and may change at any time up to the final 'as built' status in accordance with final designs of the project, regulatory approvals and planning permissions. All accessories and interior finishes such as wallpaper, chandeliers, furniture, electronics, white goods, curtains, hard and soft landscaping, pavements, features, gym, swimming pool(s) and other elements displayed in the brochure, or within the show apartment or between the plot boundary and the unit, are not part of the unit and are shown for illustrative purposes only.



PARTIAL
VIEWS

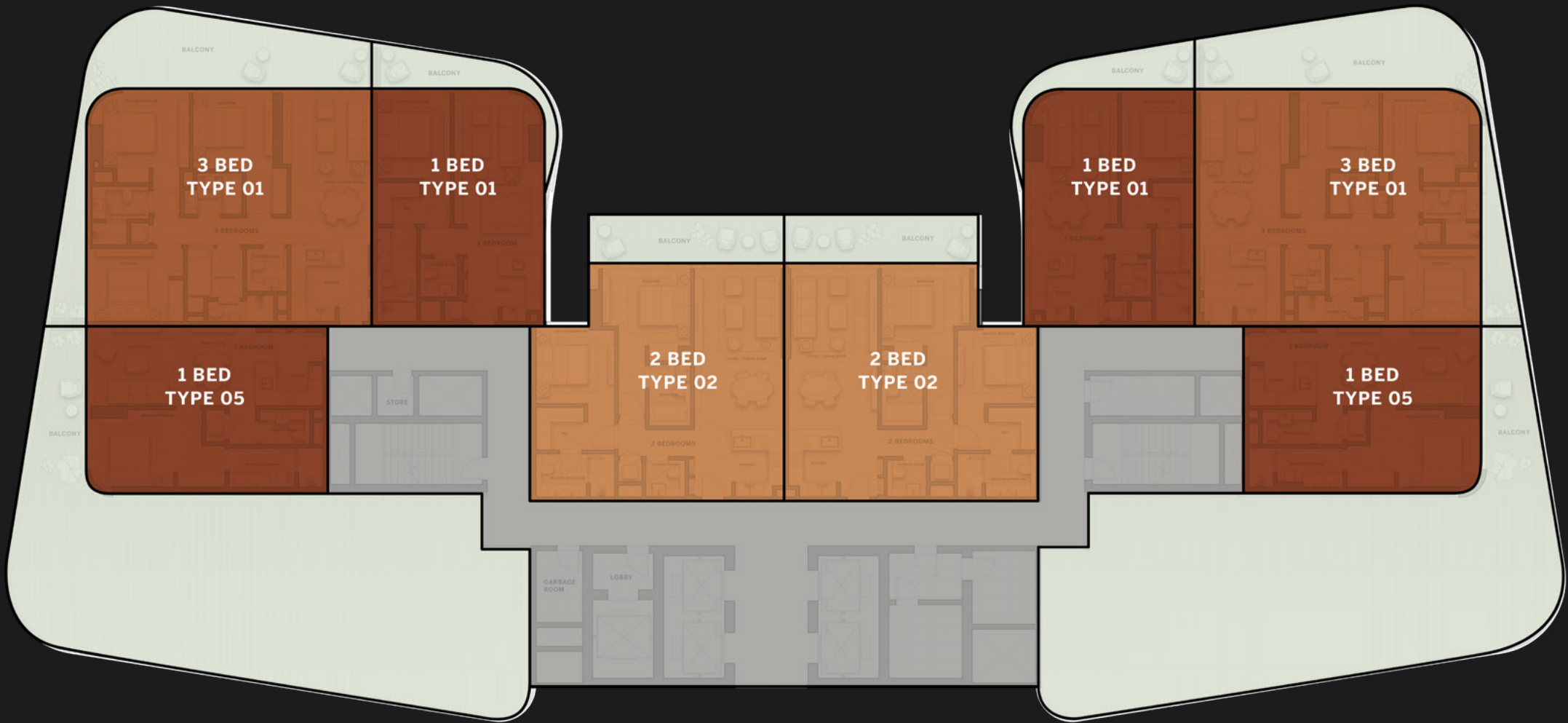
PARTIAL
VIEWS

CITY VIEWS

TYPICAL
FLOOR PLAN
SKY SUITES

LEVEL
17

OVERLOOKING
THE SKY GARDEN



PARTIAL
VIEWS

PARTIAL
VIEWS

CITY VIEWS

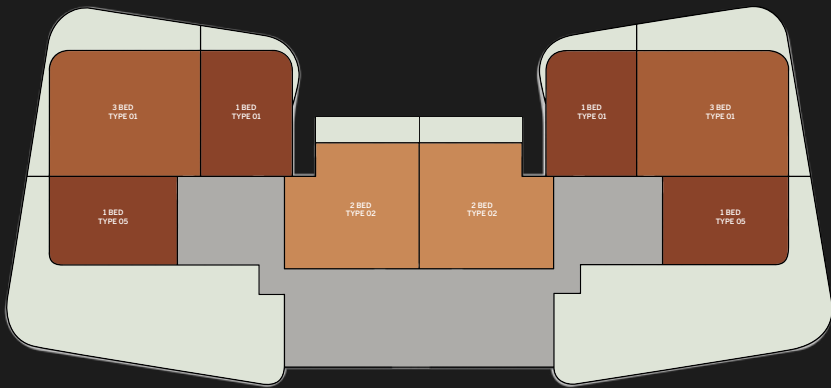
- STUDIO
- TWO BEDROOMS
- ONE BEDROOM
- THREE BEDROOMS

Disclaimer: All pictures, plans, layouts, information, data and details included in this brochure are indicative only and may change at any time up to the final 'as built' status in accordance with final designs of the project, regulatory approvals and planning permissions. All accessories and interior finishes such as wallpaper, chandeliers, furniture, electronics, white goods, curtains, hard and soft landscaping, pavements, features, gym, swimming pool(s) and other elements displayed in the brochure, or within the show apartment or between the plot boundary and the unit, are not part of the unit and are shown for illustrative purposes only.

TYPICAL
FLOOR PLAN
SKY SUITES

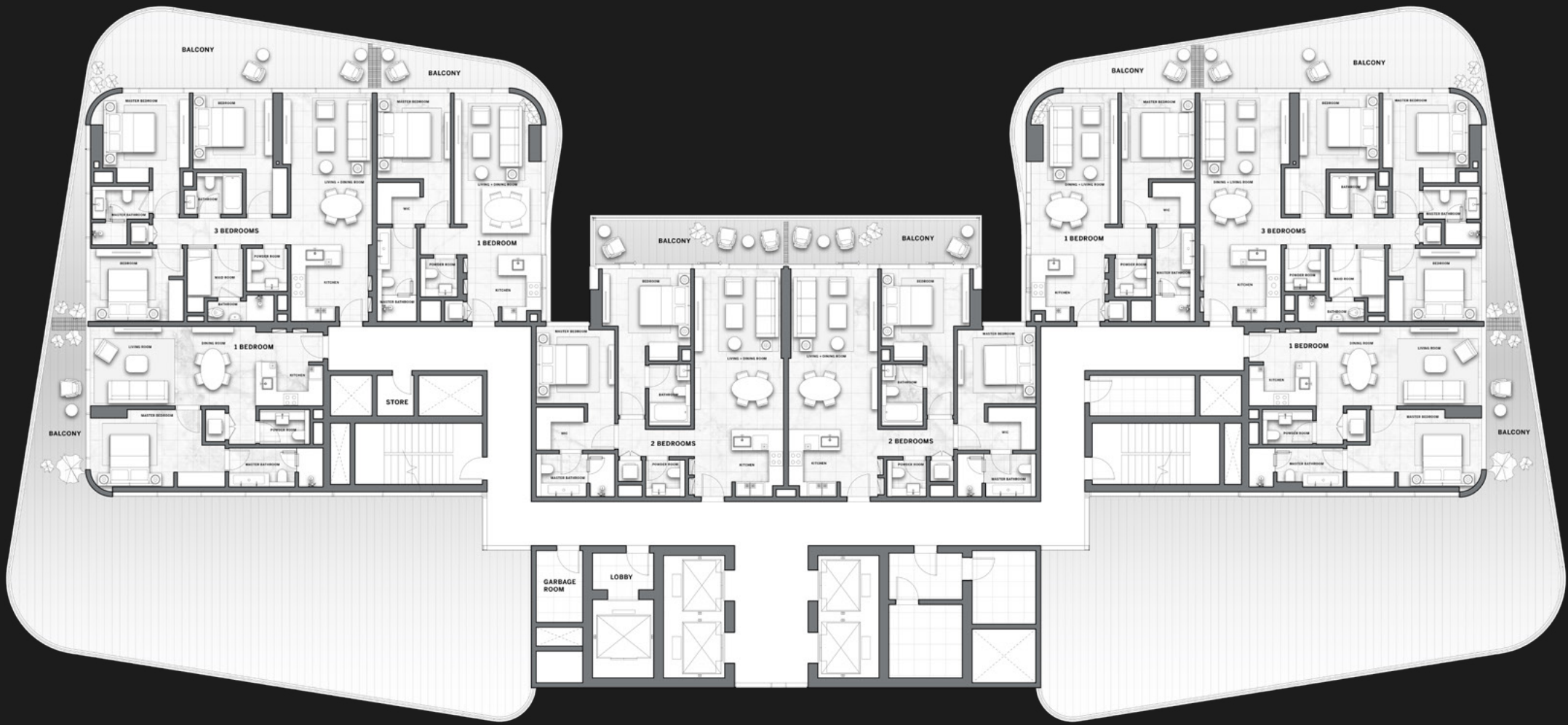
LEVEL
17

OVERLOOKING
THE SKY GARDEN



- STUDIO
- ONE BEDROOM
- TWO BEDROOMS
- THREE BEDROOMS

Disclaimer: All pictures, plans, layouts, information, data and details included in this brochure are indicative only and may change at any time up to the final 'as built' status in accordance with final designs of the project, regulatory approvals and planning permissions. All accessories and interior finishes such as wallpaper, chandeliers, furniture, electronics, white goods, curtains, hard and soft landscaping, pavements, features, gym, swimming pool(s) and other elements displayed in the brochure, or within the show apartment or between the plot boundary and the unit, are not part of the unit and are shown for illustrative purposes only.



PARTIAL
VIEWS

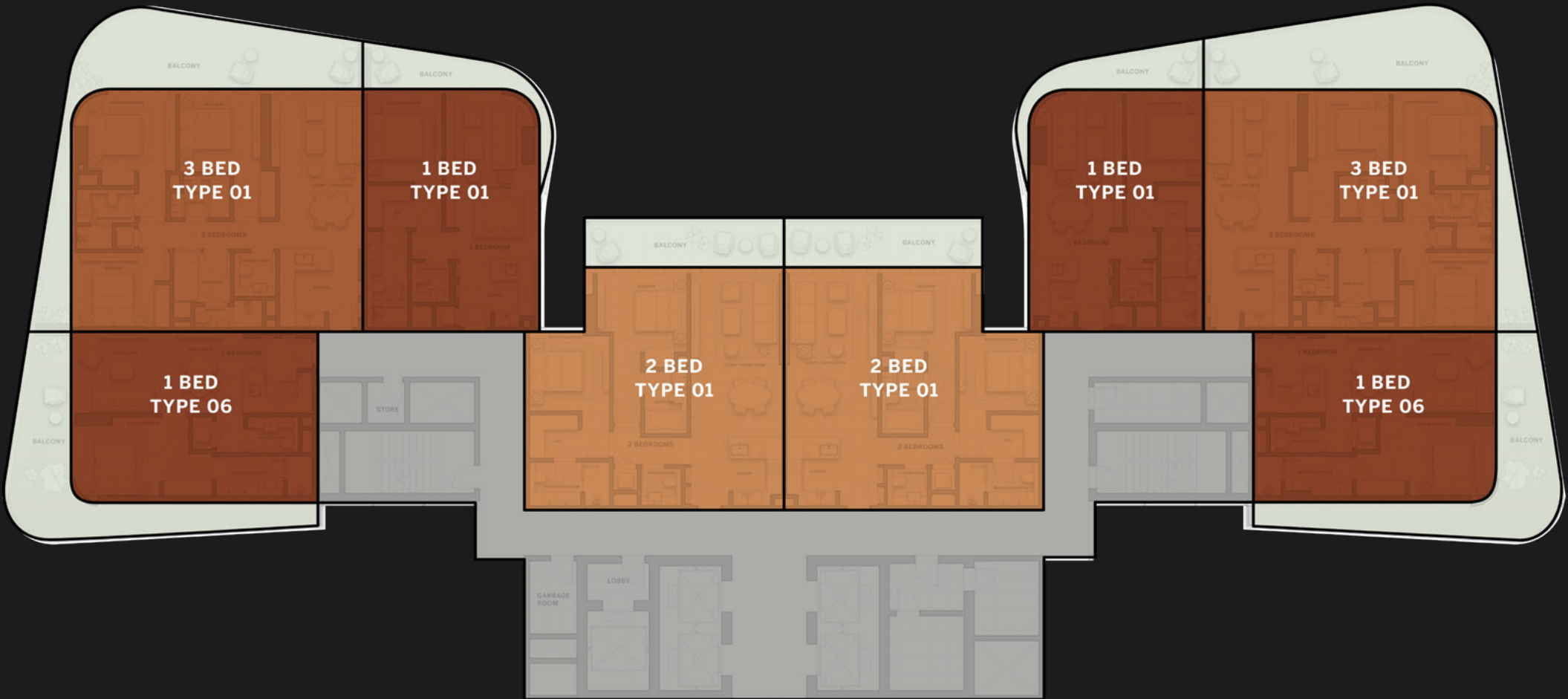
PARTIAL
VIEWS

CITY VIEWS

TYPICAL
FLOOR PLAN
SKY SUITES

LEVELS
18 - 19

OVERLOOKING
THE SKY GARDEN



- STUDIO
- TWO BEDROOMS
- ONE BEDROOM
- THREE BEDROOMS

Disclaimer: All pictures, plans, layouts, information, data and details included in this brochure are indicative only and may change at any time up to the final 'as built' status in accordance with final designs of the project, regulatory approvals and planning permissions. All accessories and interior finishes such as wallpaper, chandeliers, furniture, electronics, white goods, curtains, hard and soft landscaping, pavements, features, gym, swimming pool(s) and other elements displayed in the brochure, or within the show apartment or between the plot boundary and the unit, are not part of the unit and are shown for illustrative purposes only.

PARTIAL
VIEWS

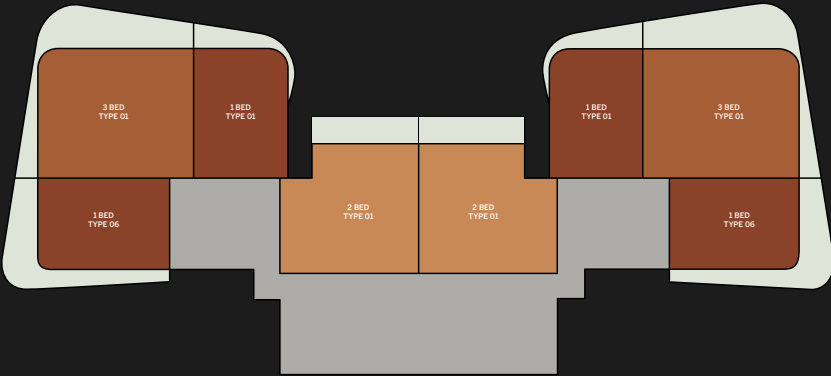
PARTIAL
VIEWS

CITY VIEWS

TYPICAL
FLOOR PLAN
SKY SUITES

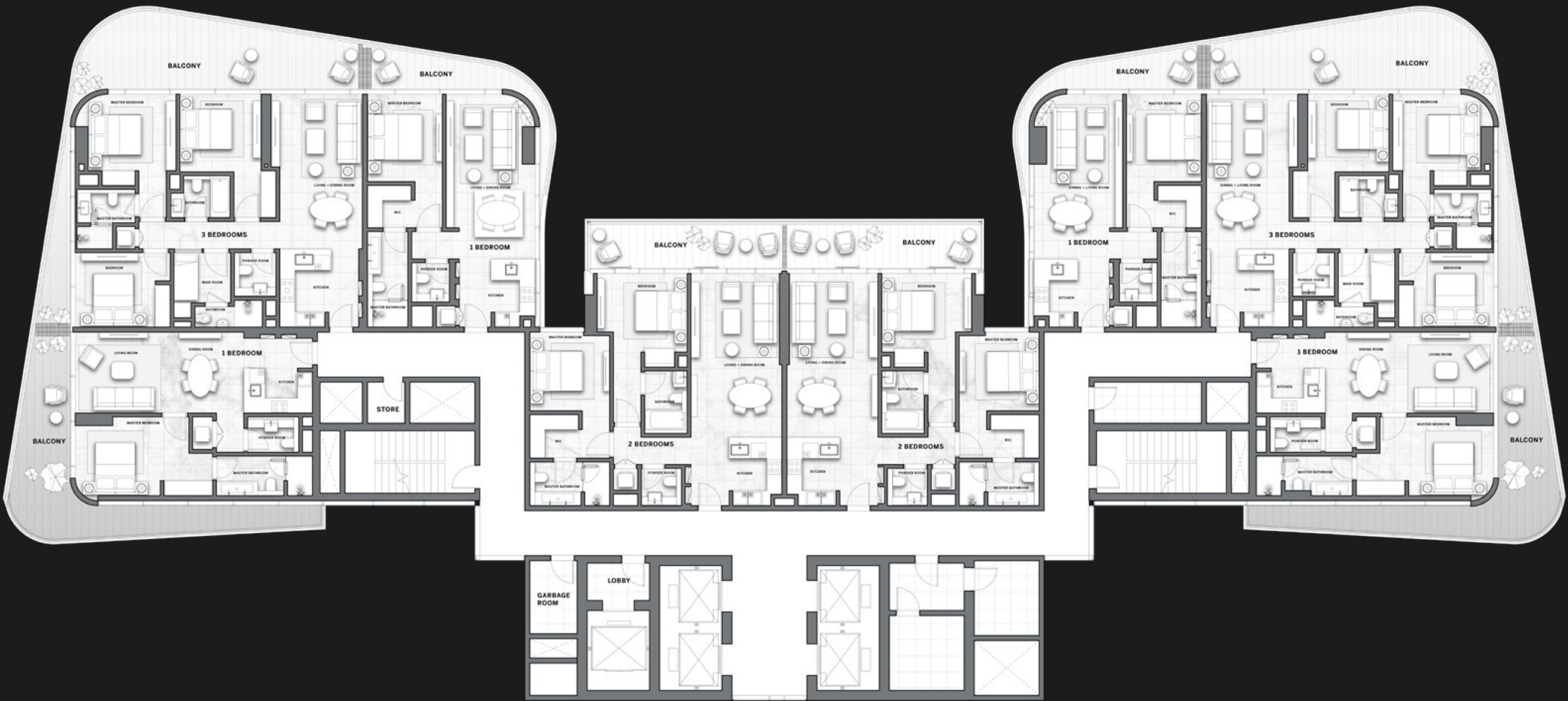
LEVELS
18 - 19

OVERLOOKING
THE SKY GARDEN



- STUDIO
- ONE BEDROOM
- TWO BEDROOMS
- THREE BEDROOMS

Disclaimer: All pictures, plans, layouts, information, data and details included in this brochure are indicative only and may change at any time up to the final 'as built' status in accordance with final designs of the project, regulatory approvals and planning permissions. All accessories and interior finishes such as wallpaper, chandeliers, furniture, electronics, white goods, curtains, hard and soft landscaping, pavements, features, gym, swimming pool(s) and other elements displayed in the brochure, or within the show apartment or between the plot boundary and the unit, are not part of the unit and are shown for illustrative purposes only.



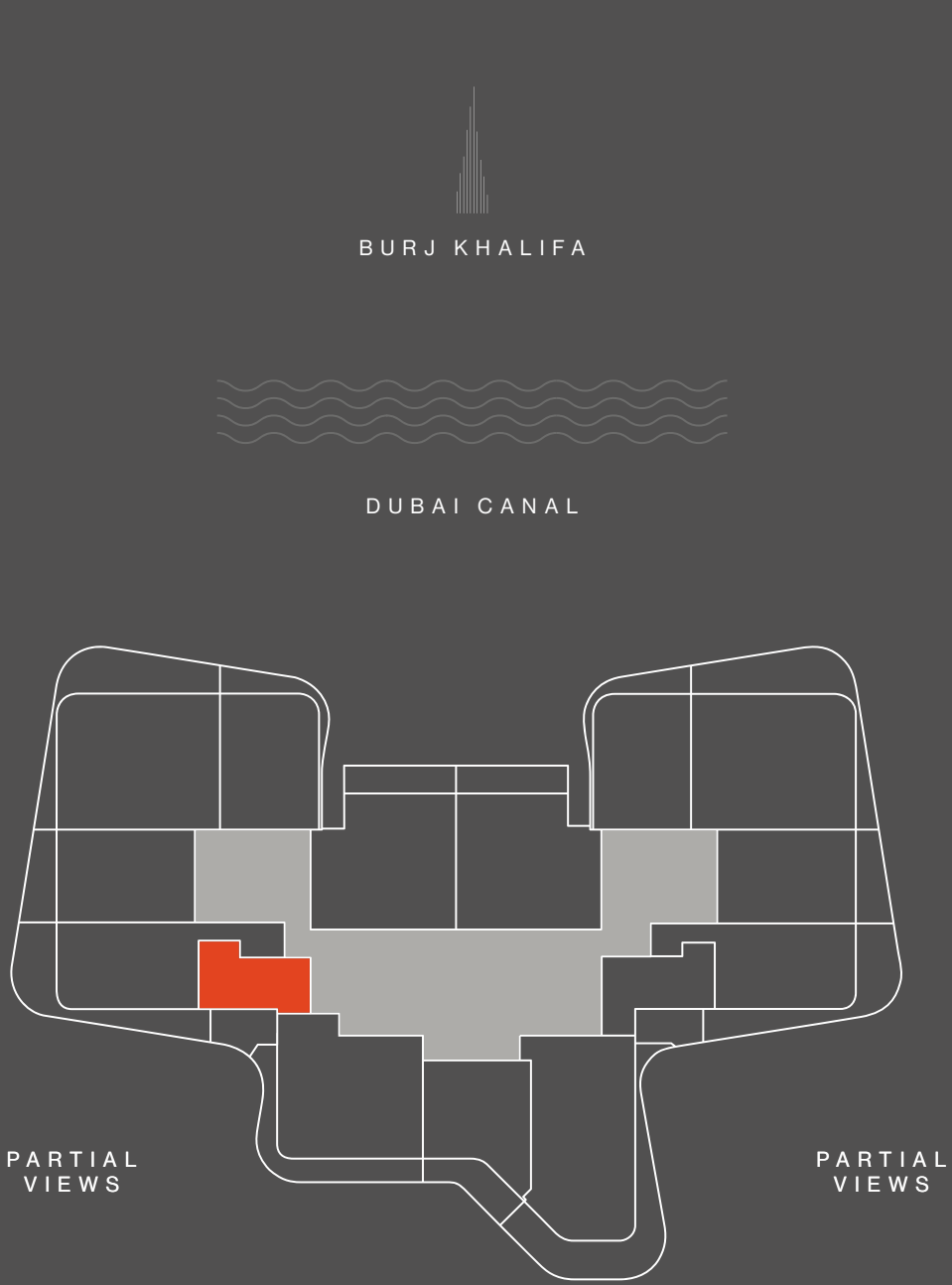
PARTIAL
VIEWS

PARTIAL
VIEWS

CITY VIEWS

STUDIO
TYPE 01

LEVELS
1 - 15



CITY VIEWS

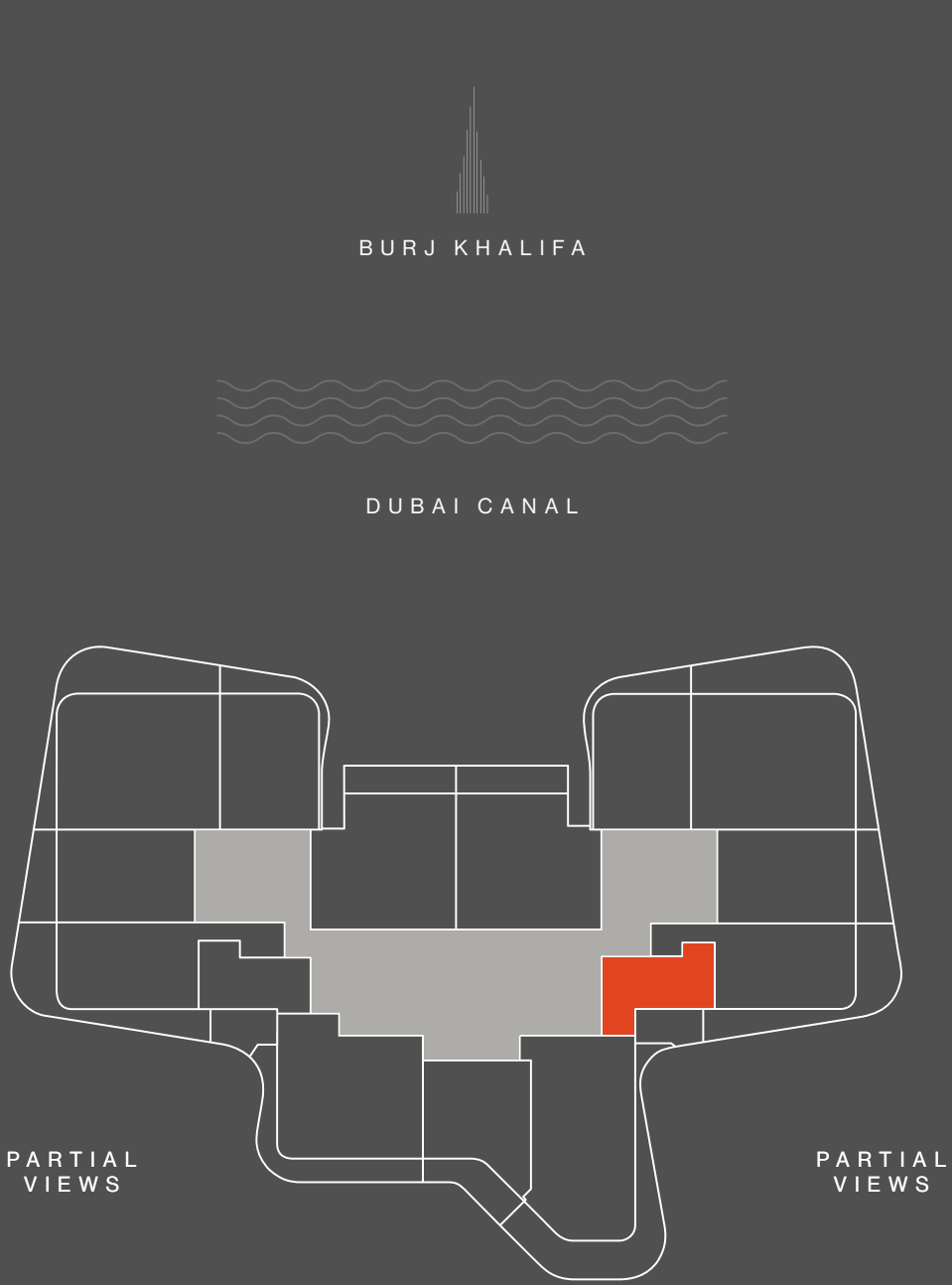


INTERNAL AREA	sqm	33	sqft	355
BALCONY	sqm	9 - 12	sqft	97 - 129
TOTAL	sqm	42 - 45	sqft	452 - 484

Disclaimer: All pictures, plans, layouts, information, data and details included in this brochure are indicative only and may change at any time up to the final 'as built' status in accordance with final designs of the project, regulatory approvals and planning permissions. All accessories and interior finishes such as wallpaper, chandeliers, furniture, electronics, white goods, curtains, hard and soft landscaping, pavements, features, gym, swimming pool(s) and other elements displayed in the brochure, or within the show apartment or between the plot boundary and the unit, are not part of the unit and are shown for illustrative purposes only.

STUDIO
TYPE 02

LEVELS
3 - 15

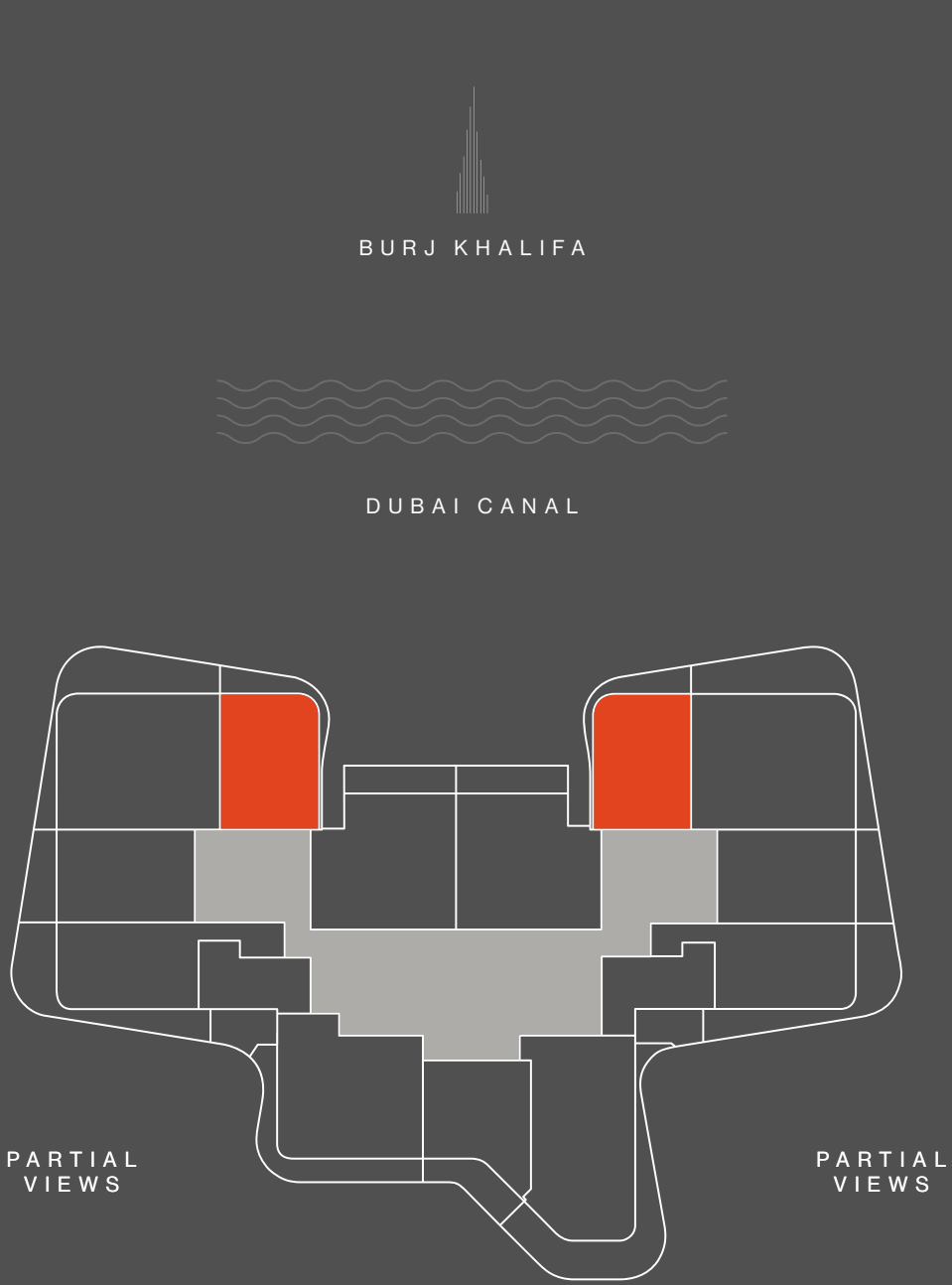


INTERNAL AREA	sqm	35	sqft	484
BALCONY	sqm	10 - 11	sqft	108 - 118
TOTAL	sqm	46 - 47	sqft	420 - 796

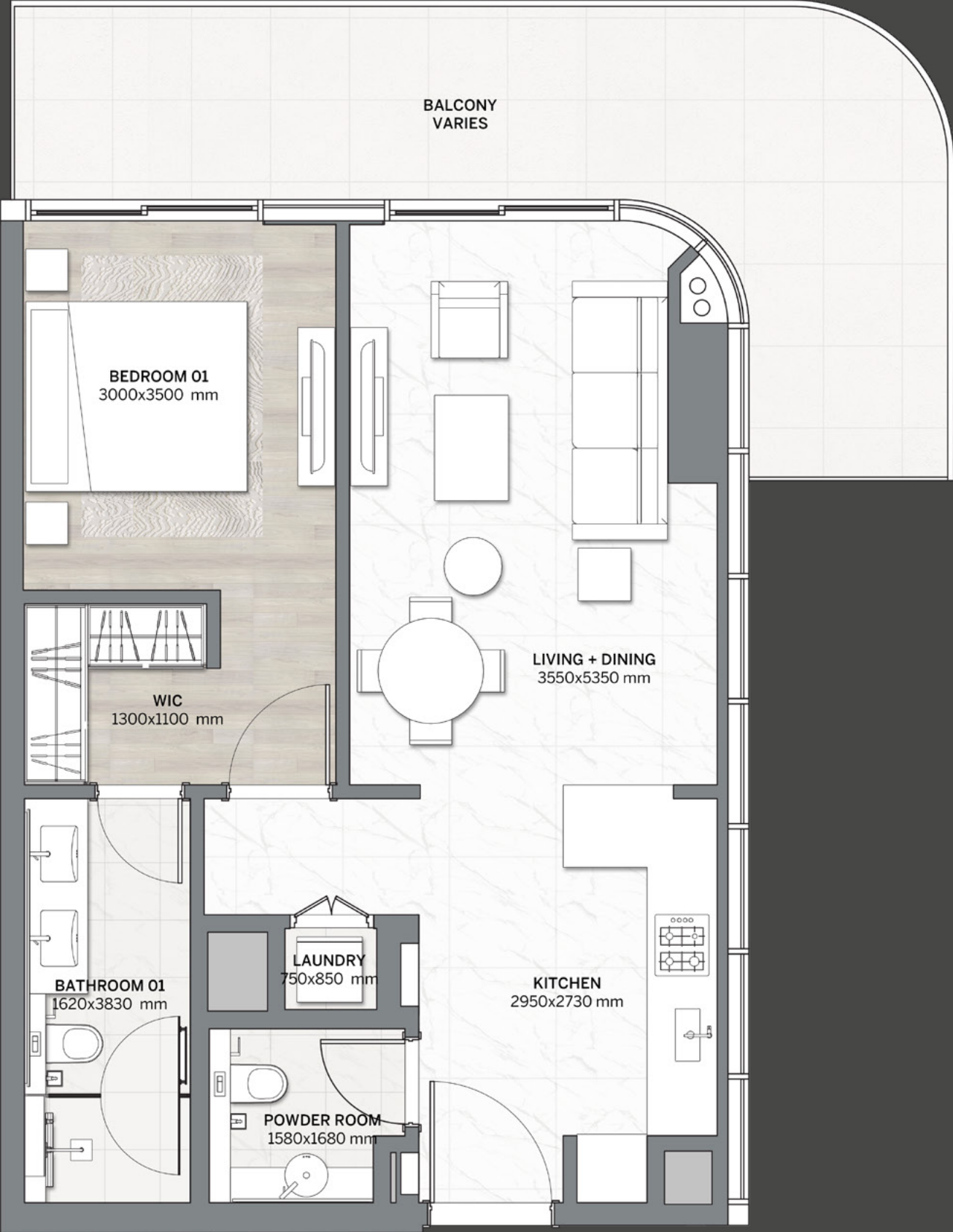
Disclaimer: All pictures, plans, layouts, information, data and details included in this brochure are indicative only and may change at any time up to the final 'as built' status in accordance with final designs of the project, regulatory approvals and planning permissions. All accessories and interior finishes such as wallpaper, chandeliers, furniture, electronics, white goods, curtains, hard and soft landscaping, pavements, features, gym, swimming pool(s) and other elements displayed in the brochure, or within the show apartment or between the plot boundary and the unit, are not part of the unit and are shown for illustrative purposes only.

1-BED
TYPE 01

LEVELS
1 - 19



CITY VIEWS

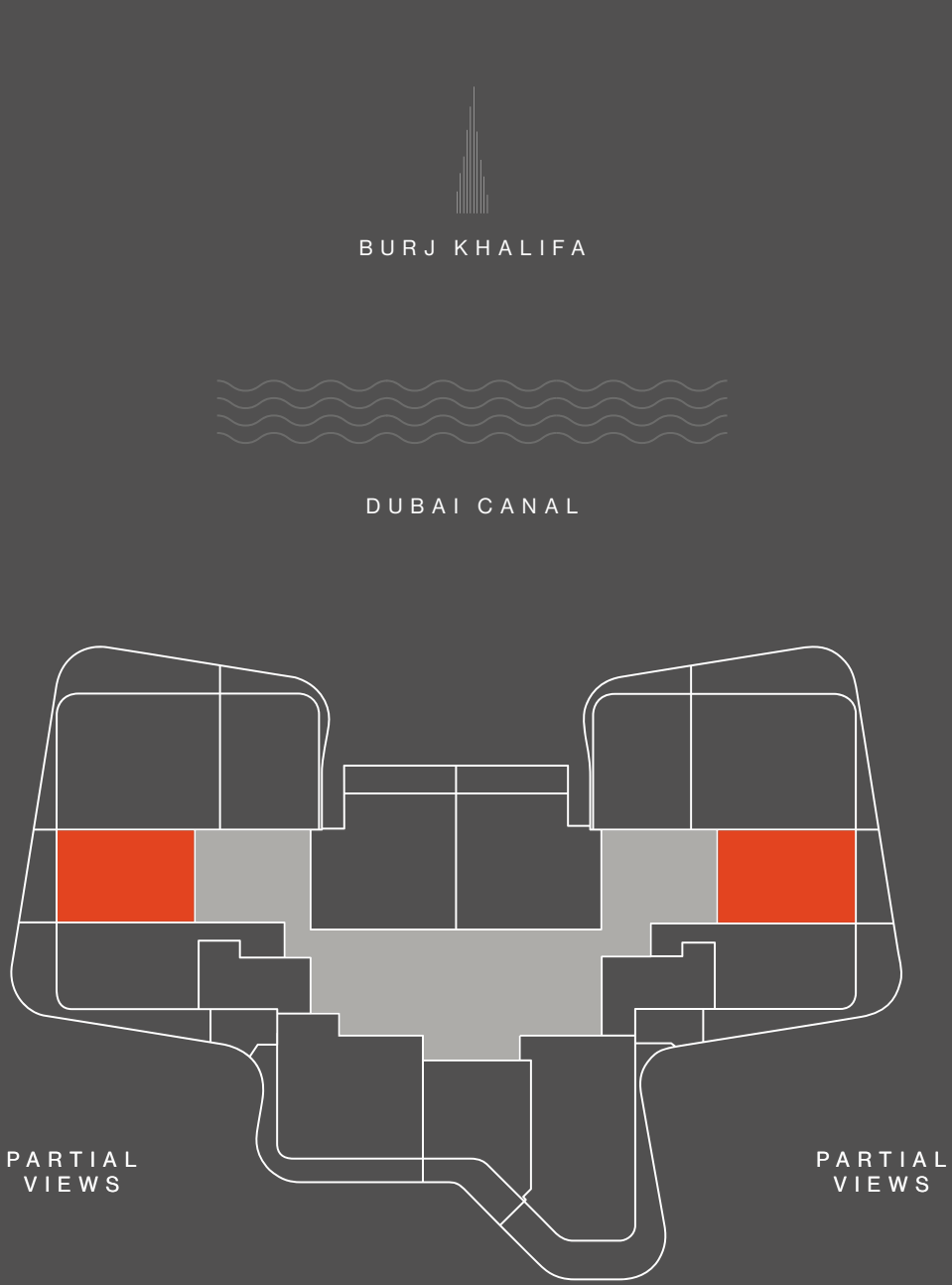


INTERNAL AREA	sqm	66	sqft	710
BALCONY	sqm	10 - 22	sqft	108 - 237
TOTAL	sqm	76 - 88	sqft	818 - 947

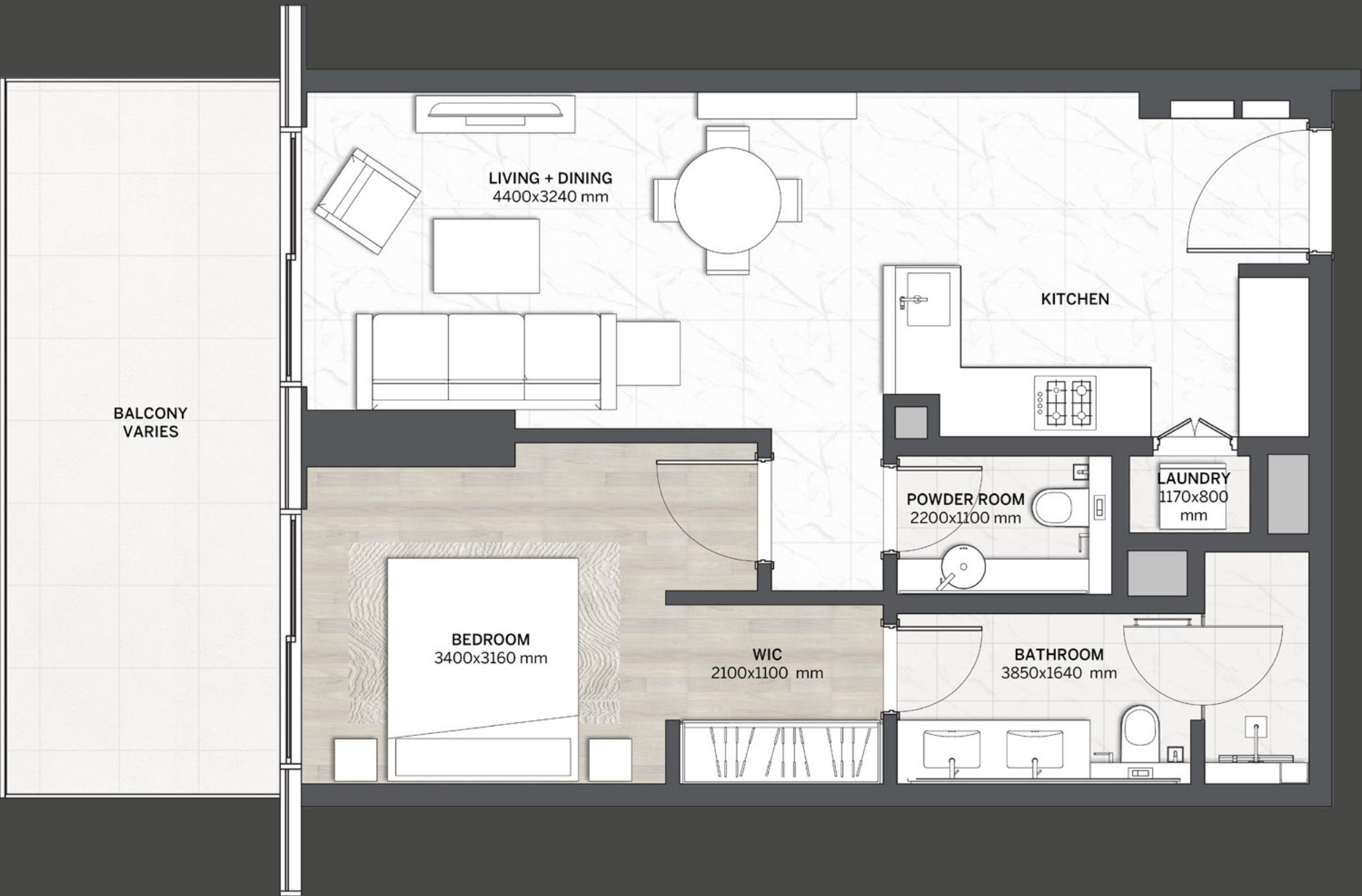
Disclaimer: All pictures, plans, layouts, information, data and details included in this brochure are indicative only and may change at any time up to the final 'as built' status in accordance with final designs of the project, regulatory approvals and planning permissions. All accessories and interior finishes such as wallpaper, chandeliers, furniture, electronics, white goods, curtains, hard and soft landscaping, pavements, features, gym, swimming pool(s) and other elements displayed in the brochure, or within the show apartment or between the plot boundary and the unit, are not part of the unit and are shown for illustrative purposes only.

1-BED
TYPE 02

LEVELS
1 - 19



CITY VIEWS

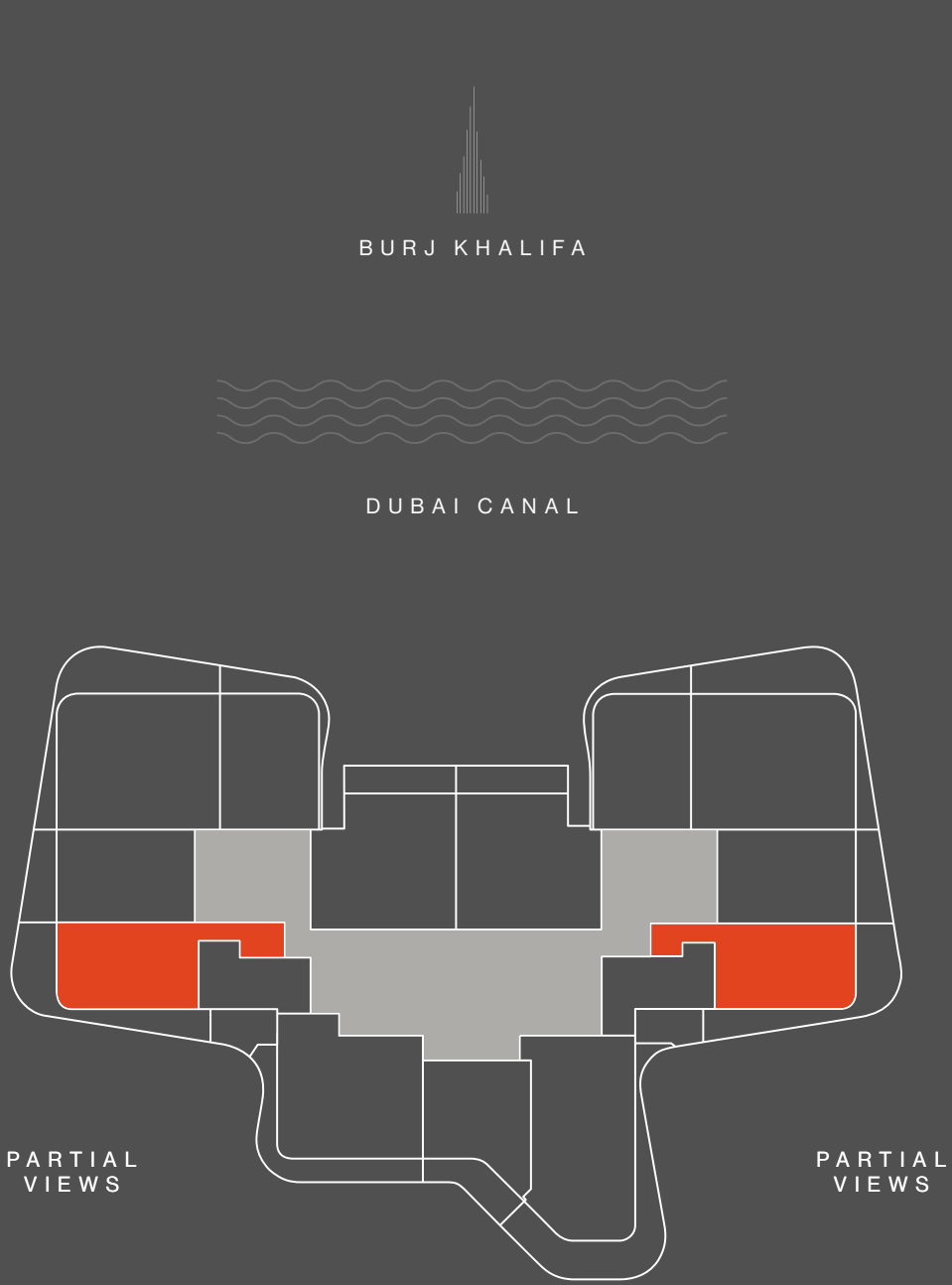


INTERNAL AREA	sqm	66	sqft	710
BALCONY	sqm	13 - 15	sqft	140 - 161
TOTAL	sqm	79 - 81	sqft	850 - 871

Disclaimer: All pictures, plans, layouts, information, data and details included in this brochure are indicative only and may change at any time up to the final 'as built' status in accordance with final designs of the project, regulatory approvals and planning permissions. All accessories and interior finishes such as wallpaper, chandeliers, furniture, electronics, white goods, curtains, hard and soft landscaping, pavements, features, gym, swimming pool(s) and other elements displayed in the brochure, or within the show apartment or between the plot boundary and the unit, are not part of the unit and are shown for illustrative purposes only.

1-BED
TYPE 03

LEVELS
1 - 15



CITY VIEWS

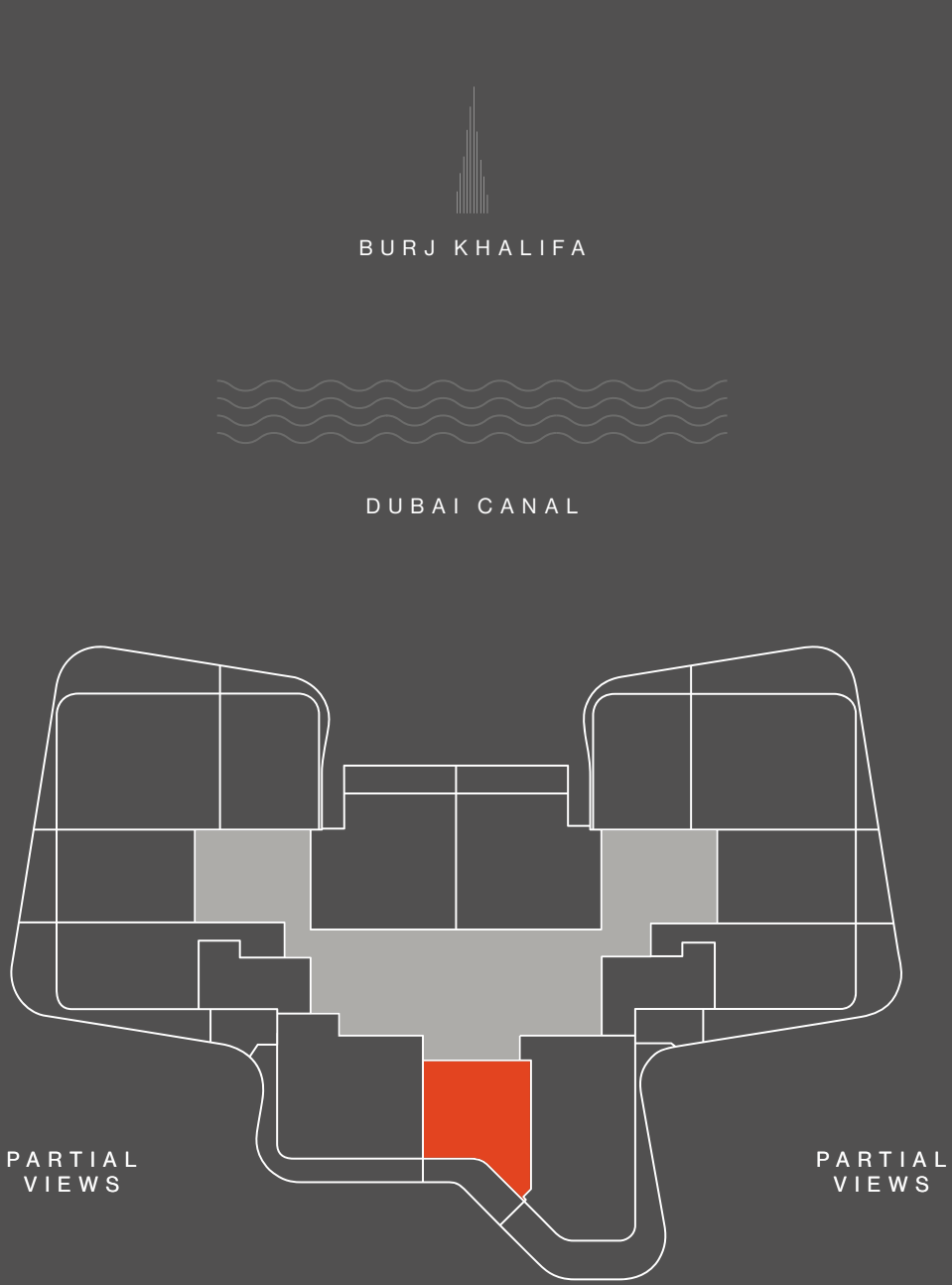


INTERNAL AREA	sqm	71	sqft	764
BALCONY	sqm	27 - 49	sqft	291 - 527
TOTAL	sqm	98 - 120	sqft	1,055 - 1,292

Disclaimer: All pictures, plans, layouts, information, data and details included in this brochure are indicative only and may change at any time up to the final 'as built' status in accordance with final designs of the project, regulatory approvals and planning permissions. All accessories and interior finishes such as wallpaper, chandeliers, furniture, electronics, white goods, curtains, hard and soft landscaping, pavements, features, gym, swimming pool(s) and other elements displayed in the brochure, or within the show apartment or between the plot boundary and the unit, are not part of the unit and are shown for illustrative purposes only.

1-BED
TYPE 04

LEVELS
1 - 15



INTERNAL AREA	sqm	60	sqft	646
BALCONY	sqm	14 - 15	sqft	151 - 161
TOTAL	sqm	74 - 75	sqft	797 - 807

Disclaimer: All pictures, plans, layouts, information, data and details included in this brochure are indicative only and may change at any time up to the final 'as built' status in accordance with final designs of the project, regulatory approvals and planning permissions. All accessories and interior finishes such as wallpaper, chandeliers, furniture, electronics, white goods, curtains, hard and soft landscaping, pavements, features, gym, swimming pool(s) and other elements displayed in the brochure, or within the show apartment or between the plot boundary and the unit, are not part of the unit and are shown for illustrative purposes only.

1-BED
TYPE 05

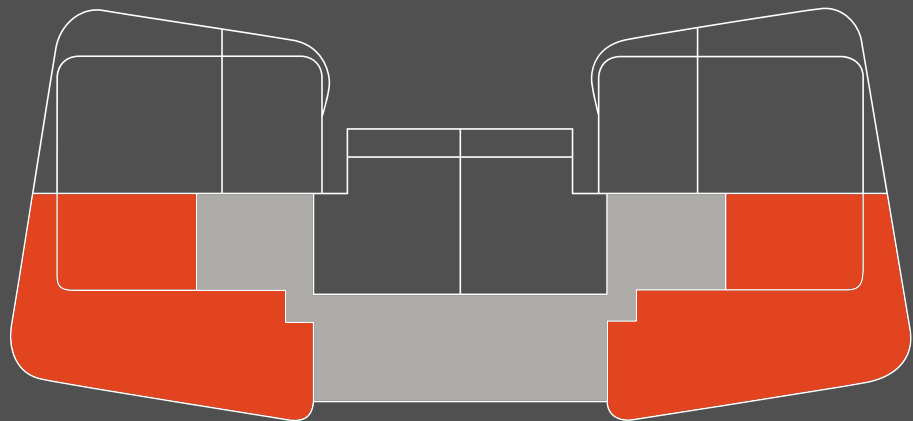
LEVEL
17



BURJ KHALIFA



DUBAI CANAL



PARTIAL
VIEWS

PARTIAL
VIEWS

CITY VIEWS



INTERNAL AREA	sqm	62	sqft	667
BALCONY	sqm	167	sqft	1,804
TOTAL	sqm	230	sqft	2,471

Disclaimer: All pictures, plans, layouts, information, data and details included in this brochure are indicative only and may change at any time up to the final 'as built' status in accordance with final designs of the project, regulatory approvals and planning permissions. All accessories and interior finishes such as wallpaper, chandeliers, furniture, electronics, white goods, curtains, hard and soft landscaping, pavements, features, gym, swimming pool(s) and other elements displayed in the brochure, or within the show apartment or between the plot boundary and the unit, are not part of the unit and are shown for illustrative purposes only.

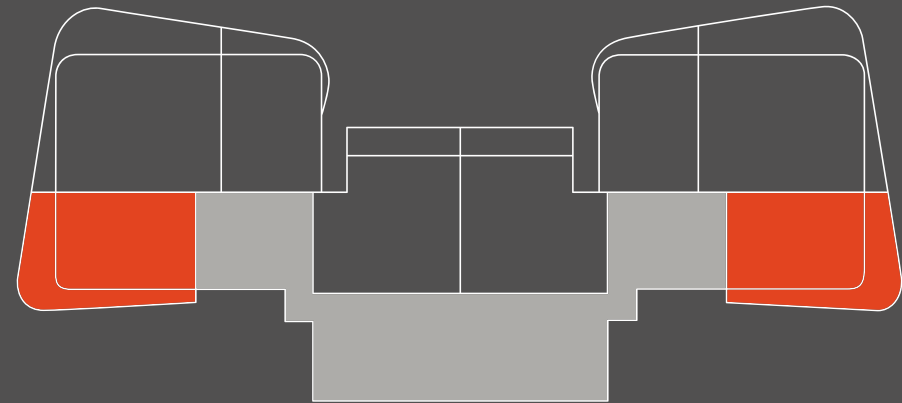
1-BED
TYPE 06

LEVELS
18 - 19



BURJ KHALIFA

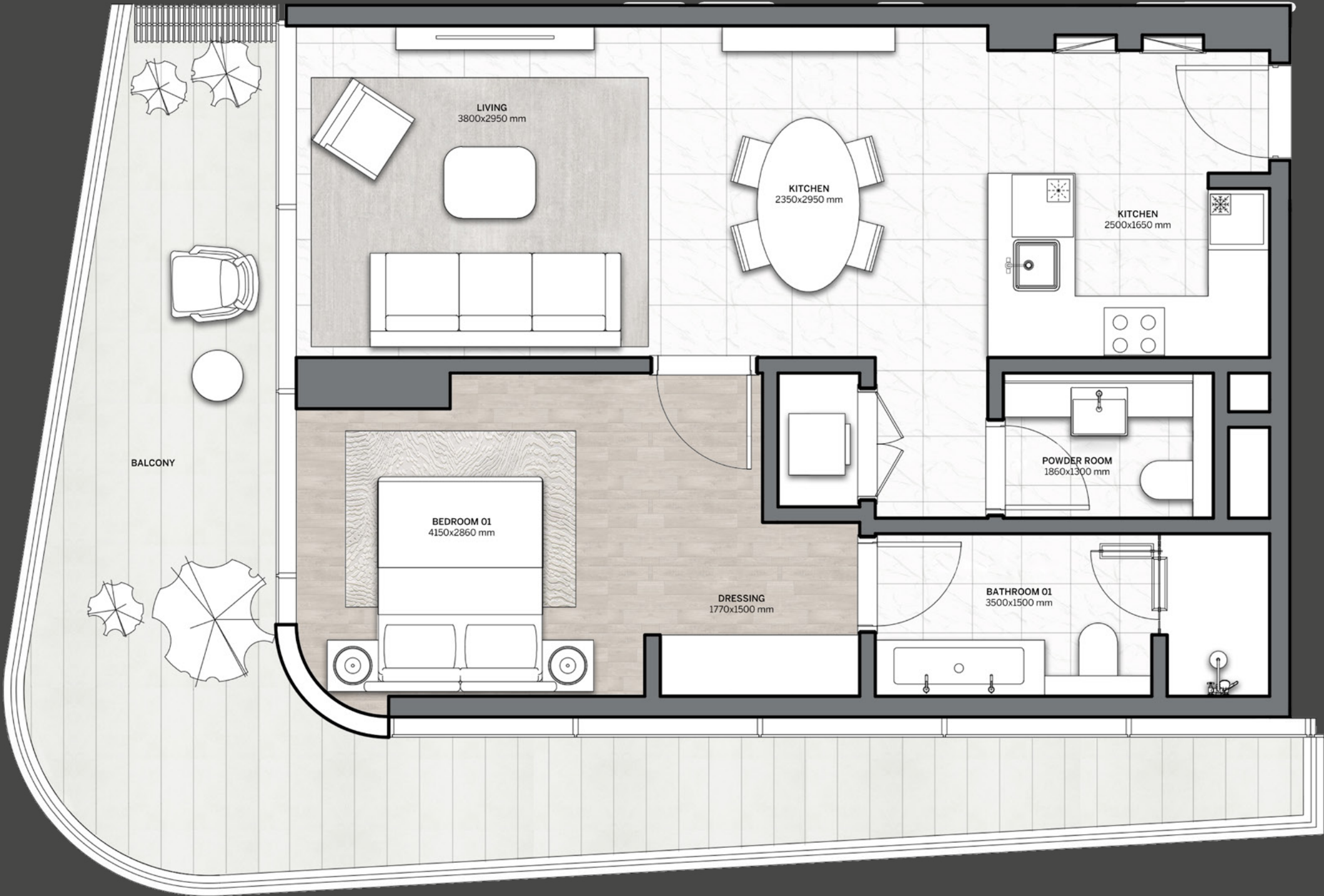
DUBAI CANAL



PARTIAL
VIEWS

PARTIAL
VIEWS

CITY VIEWS

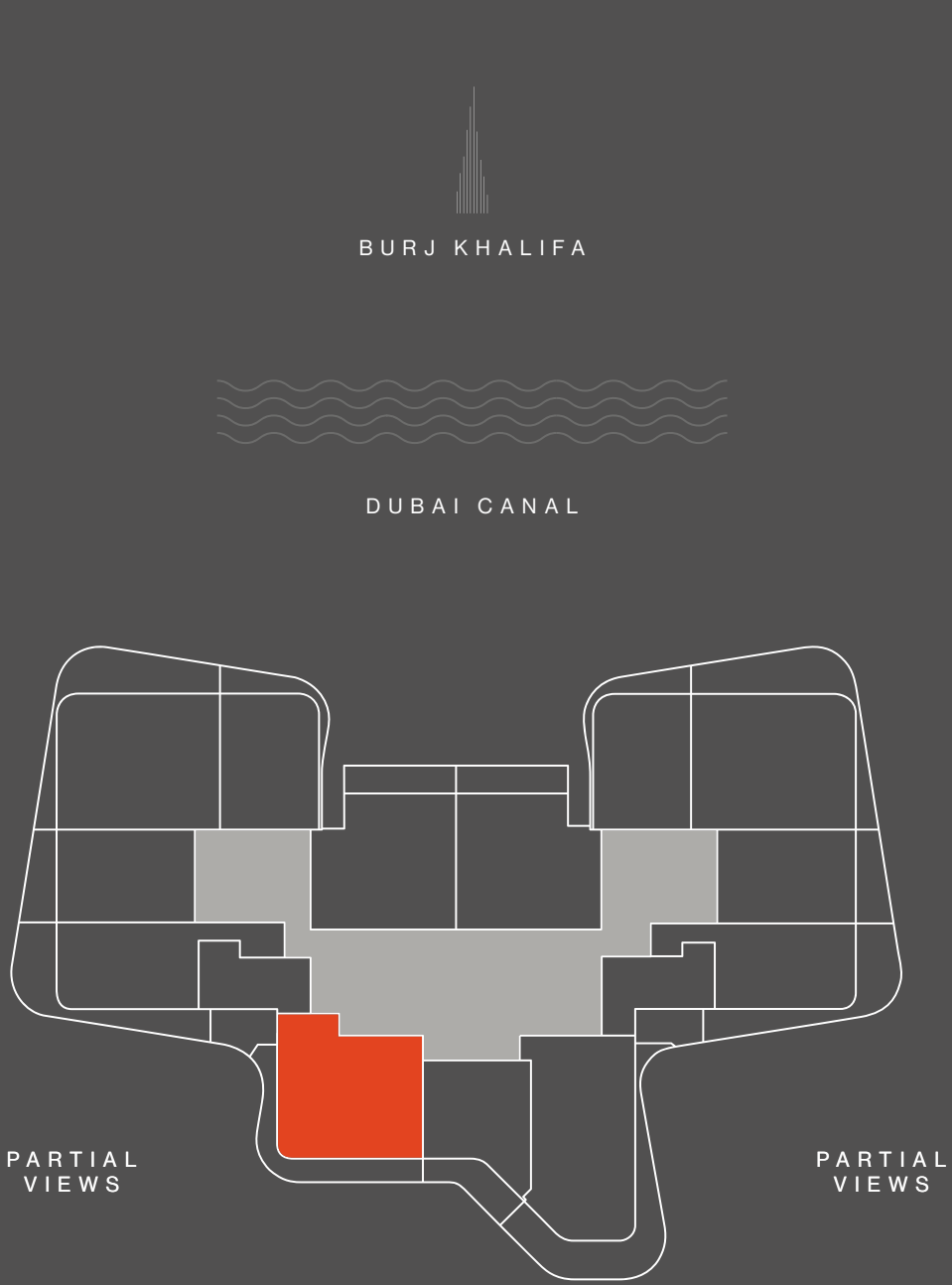


INTERNAL AREA	sqm	62	sqft	674
BALCONY	sqm	27	sqft	291
TOTAL	sqm	90	sqft	964

Disclaimer: All pictures, plans, layouts, information, data and details included in this brochure are indicative only and may change at any time up to the final 'as built' status in accordance with final designs of the project, regulatory approvals and planning permissions. All accessories and interior finishes such as wallpaper, chandeliers, furniture, electronics, white goods, curtains, hard and soft landscaping, pavements, features, gym, swimming pool(s) and other elements displayed in the brochure, or within the show apartment or between the plot boundary and the unit, are not part of the unit and are shown for illustrative purposes only.

2 - BEDS
TYPE 01

LEVELS
1 - 15



CITY VIEWS

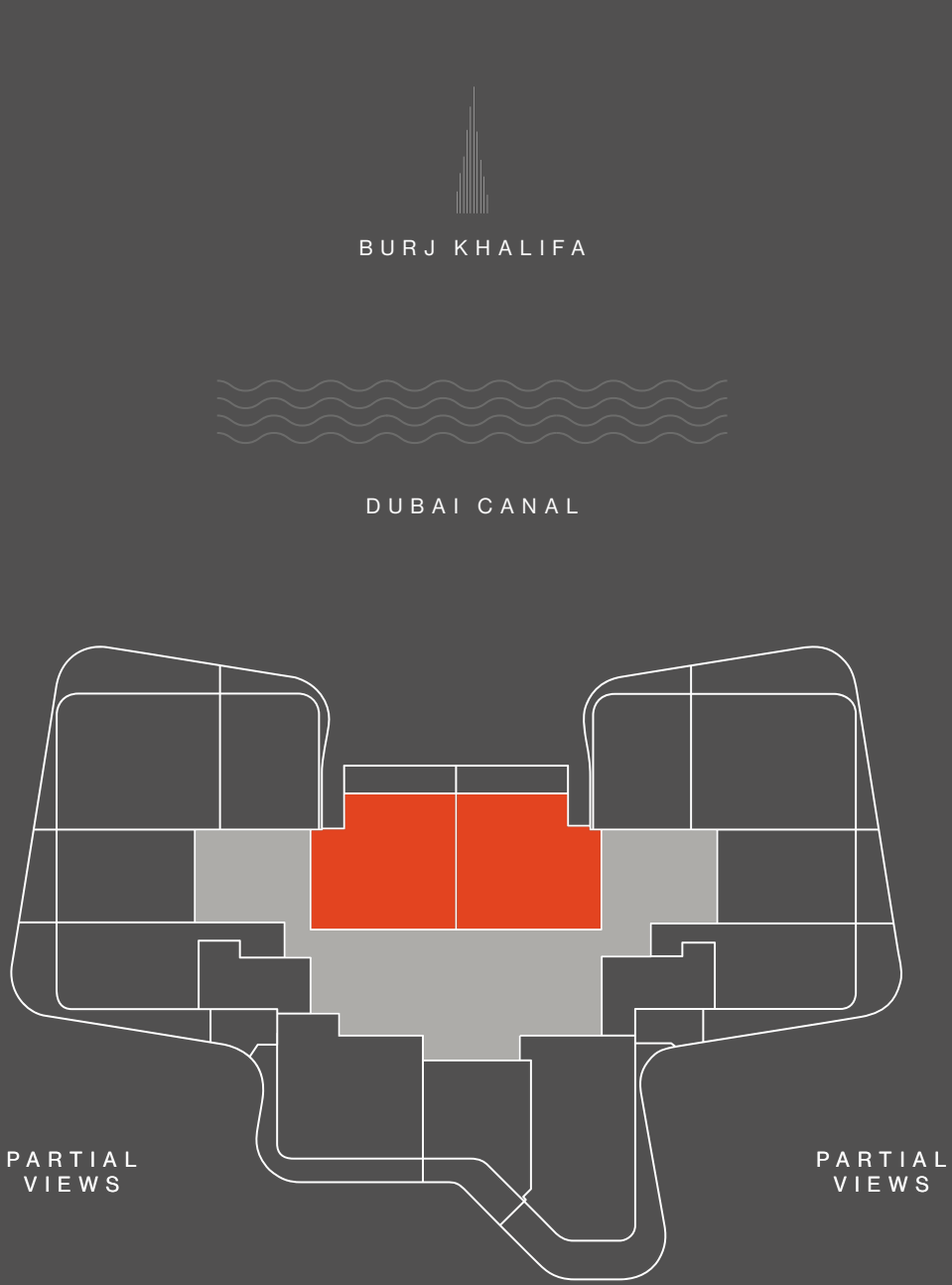


INTERNAL AREA	sqm	91	sqft	980
BALCONY	sqm	26 - 28	sqft	279 - 302
TOTAL	sqm	117 - 119	sqft	1,259 - 1,281

Disclaimer: All pictures, plans, layouts, information, data and details included in this brochure are indicative only and may change at any time up to the final 'as built' status in accordance with final designs of the project, regulatory approvals and planning permissions. All accessories and interior finishes such as wallpaper, chandeliers, furniture, electronics, white goods, curtains, hard and soft landscaping, pavements, features, gym, swimming pool(s) and other elements displayed in the brochure, or within the show apartment or between the plot boundary and the unit, are not part of the unit and are shown for illustrative purposes only.

2-BEDS
TYPE 02

LEVELS
1 - 19



CITY VIEWS

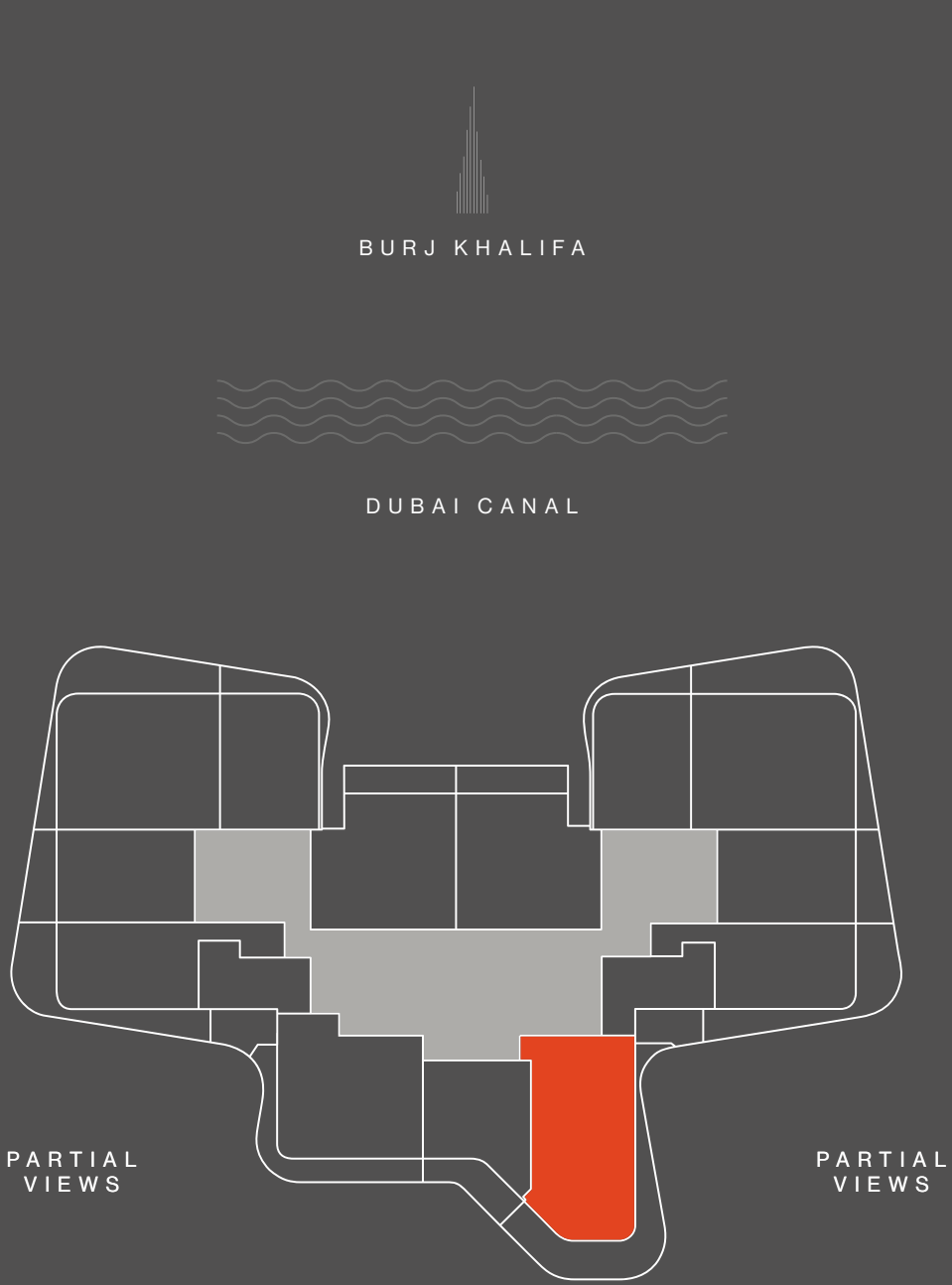


INTERNAL AREA	sqm	92	sqft	990
BALCONY	sqm	14	sqft	151
TOTAL	sqm	106	sqft	1,141

Disclaimer: All pictures, plans, layouts, information, data and details included in this brochure are indicative only and may change at any time up to the final 'as built' status in accordance with final designs of the project, regulatory approvals and planning permissions. All accessories and interior finishes such as wallpaper, chandeliers, furniture, electronics, white goods, curtains, hard and soft landscaping, pavements, features, gym, swimming pool(s) and other elements displayed in the brochure, or within the show apartment or between the plot boundary and the unit, are not part of the unit and are shown for illustrative purposes only.

2-BEDS
TYPE 03

LEVELS
1 - 15



INTERNAL AREA	sqm	107	sqft	1,152
BALCONY	sqm	39 - 46	sqft	420 - 495
TOTAL	sqm	146 - 153	sqft	1,572 - 1,647

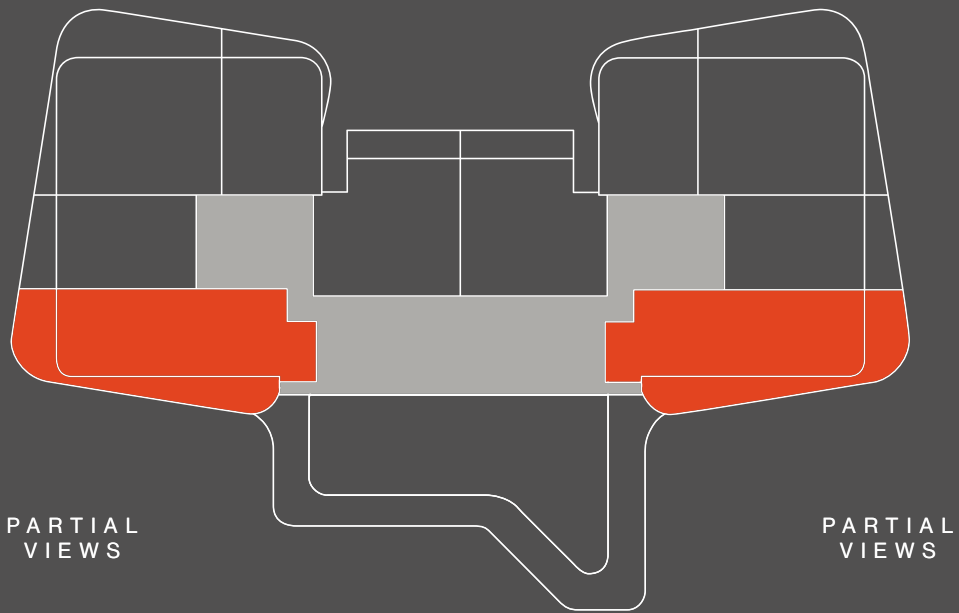
Disclaimer: All pictures, plans, layouts, information, data and details included in this brochure are indicative only and may change at any time up to the final 'as built' status in accordance with final designs of the project, regulatory approvals and planning permissions. All accessories and interior finishes such as wallpaper, chandeliers, furniture, electronics, white goods, curtains, hard and soft landscaping, pavements, features, gym, swimming pool(s) and other elements displayed in the brochure, or within the show apartment or between the plot boundary and the unit, are not part of the unit and are shown for illustrative purposes only.

2-BEDS
TYPE 04

LEVEL
16

BURJ KHALIFA

DUBAI CANAL



CITY VIEWS

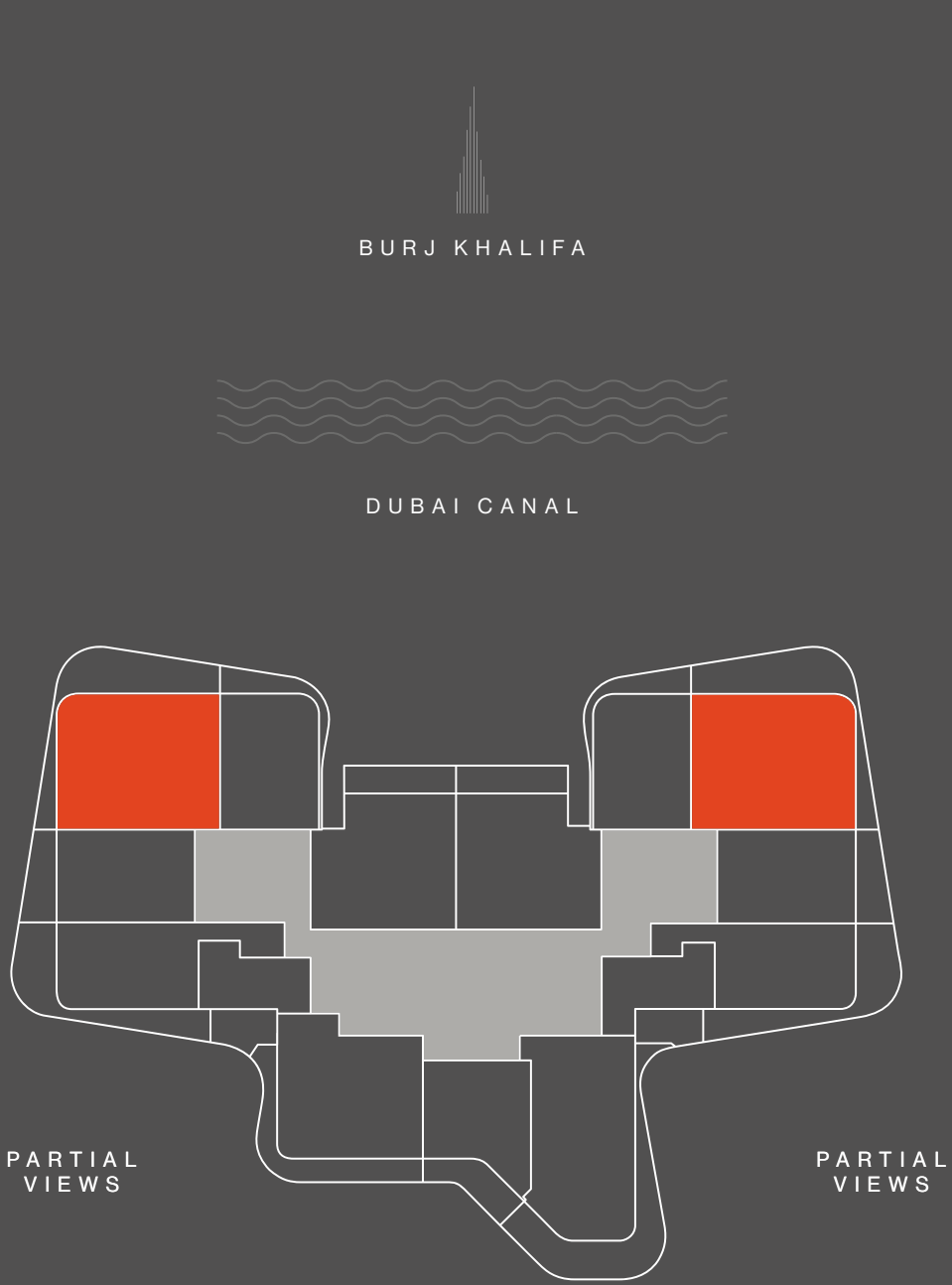


INTERNAL AREA	sqm	107	sqft	1,152
BALCONY	sqm	39 - 46	sqft	420 - 495
TOTAL	sqm	146 - 153	sqft	1,572 - 1,647

Disclaimer: All pictures, plans, layouts, information, data and details included in this brochure are indicative only and may change at any time up to the final 'as built' status in accordance with final designs of the project, regulatory approvals and planning permissions. All accessories and interior finishes such as wallpaper, chandeliers, furniture, electronics, white goods, curtains, hard and soft landscaping, pavements, features, gym, swimming pool(s) and other elements displayed in the brochure, or within the show apartment or between the plot boundary and the unit, are not part of the unit and are shown for illustrative purposes only.

3 - BEDS
TYPE 01

LEVELS
1 - 19



CITY VIEWS



INTERNAL AREA	sqm	112	sqft	1,206
BALCONY	sqm	35 - 53	sqft	376 - 570
TOTAL	sqm	147 - 165	sqft	1,582 - 1,776

Disclaimer: All pictures, plans, layouts, information, data and details included in this brochure are indicative only and may change at any time up to the final 'as built' status in accordance with final designs of the project, regulatory approvals and planning permissions. All accessories and interior finishes such as wallpaper, chandeliers, furniture, electronics, white goods, curtains, hard and soft landscaping, pavements, features, gym, swimming pool(s) and other elements displayed in the brochure, or within the show apartment or between the plot boundary and the unit, are not part of the unit and are shown for illustrative purposes only.

REGISTER



YOUR INTEREST



[DARGLOBAL.CO.UK/DG1/](https://darglobal.co.uk/dg1/)



DarGlobal PLC is an international real estate developer specializing in exclusive luxury developments across the world's most coveted cosmopolitan cities .

Catering to global citizens seeking prime investments, second homes, and luxury living, DarGlobal transforms real estate into economic catalysts, unlocking opportunities for both investors and the countries it enters.

DarGlobal has partnered with over 10 world-renowned luxury brands, including Trump Organization, Aston Martin, Automobili Lamborghini, ELIE SAAB, Marriott Residences, Missoni, Mouawad, Pagani Automobili, W Hotels, and Versace. These collaborations offer unique investment opportunities in global cities, providing both wealth growth and protection.

Listed on the London Stock Exchange, DarGlobal goes beyond property development, it drives economic transformation by attracting international clients and Foreign Direct Investment (FDI). By injecting capital, confidence, and industry expertise, DarGlobal enhances local infrastructure while elevating the global appeal of each destination.

With a presence in 14 international cities across 9 countries, DarGlobal's portfolio spans the United Kingdom, Spain, Greece, Saudi Arabia, the UAE, Oman, and Qatar. The company is also expanding into world-class hospitality, developing luxury hotels in Dubai, the Maldives, and Oman.

To support its international clientele, DarGlobal has sales and customer service offices in New York, London, Marbella, Athens, Dubai, Jeddah, Riyadh, Muscat, and Doha.



OUR OFFICES



DUBAI, UAE

30th Floor, Jumeirah Emirates Towers,
Sheikh Zayed Road. Dubai, UAE
T +971 4562 9616

LONDON, UK

50 Hans Crescent, Knightsbridge,
London, SW1X 0NA, United Kingdom
T +44 20 8135 4699

MARBELLA, SPAIN

Golden Mile, Bulevar Príncipe Alfonso de
Hohenlohe, Marbella 29602, Málaga, Spain
T +34 95112 1221

MUSCAT, OMAN

Royal Opera House Muscat Shatti
Al Qurum, Muscat, Oman
T +968 2270 2771

RIYADH, KSA

2135 Tahlia St., Al Olaya,
12222 Riyadh, ksa
T +966 800 118 8081

JEDDAH, KSA

Ash Shati, 23613, King Abdulaziz Road,
Jeddah, ksa
T +966 800 118 8081

DOHA, QATAR

Malibu Building, Lusail Entertainment
City, Doha, Qatar
T +974 4410 8282

NEW YORK CITY, USA

19th floor, Trump Tower New York,
725 5th Ave, New York, NY 10022, USA
T +1 212 715 1067

ATHENS, GREECE

7 Merlin Street, 10671, Attica,
Athens, Greece

For more information on DG1
please call +971 4562 9616 (UAE)

You can visit our website at darglobal.co.uk
or via our social media platforms



DARGLOBAL.CO.UK